

ELECTRICAL GENERAL NOTES

- 1. DRAWINGS ARE DIAGRAMMATIC AND DEFINE THE INTENT OF THE WORK. LOCATIONS OF EQUIPMENT, FIXTURES, DEVICES, PANELBOARDS, DUCTS, PIPING, DIFFUSERS, PARTITIONS, OPENINGS, ETC. ARE APPROXIMATE AND ARE SUBJECT TO MODIFICATIONS CAUSED BY STRUCTURAL CONDITIONS AND EQUIPMENT PROVIDED BY OTHER CONTRACTORS, SUBCONTRACTORS OR THE OWNER...

- 19. PROVIDE ADEQUATE TEMPORARY ELECTRICAL LIGHT AND POWER FOR THE PROJECT WORK OF ALL TRADES. 20. REFER TO DRAWINGS AND SPECIFICATIONS OF OTHER TRADES FOR EQUIPMENT LOCATIONS AND CONTROLS.

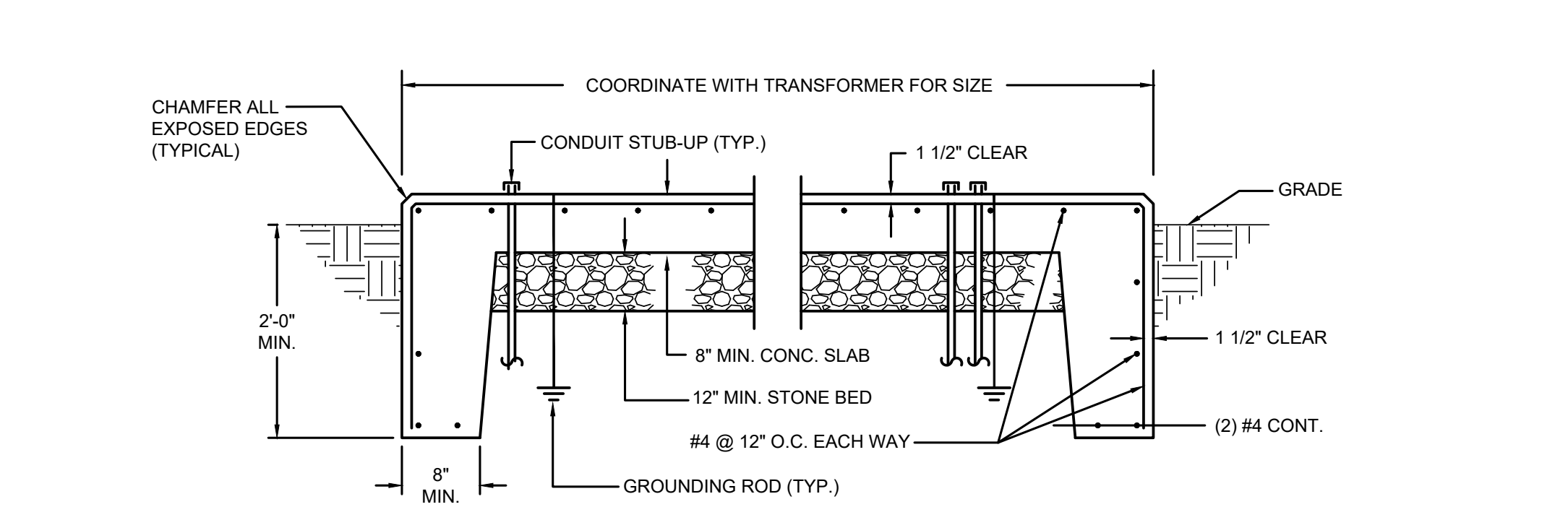
- 37. PROVIDE TWO SETS OF OPERATION AND MAINTENANCE MANUALS, BOUND AND INDEXED, WITH INSTRUCTIONS FOR ALL ELECTRICAL DEVICES, EQUIPMENT, APPLIANCES AND SYSTEMS. 38. PROVIDE ONE SET OF REPRODUCIBLE CONTRACT DRAWINGS, OR DIGITAL DATA FILES USING SAME SOFTWARE PROGRAM, VERSION, AND OPERATING SYSTEM AS CONTRACT DOCUMENTS...

- 43. CONTRACTOR SHALL PROVIDE FIELD MARKINGS ON ELECTRICAL SERVICE EQUIPMENT TO INCLUDE THE AVAILABLE SHORT CIRCUIT RATINGS FROM THE UTILITY PER NEC 110.24. 44. CONTRACTOR SHALL INFORM THE ENGINEER IMMEDIATELY OF ANY CONFLICT DISCOVERED BEFORE PERFORMING ANY WORK RELATED TO SUCH CONFLICT.

LIGHT FIXTURE SCHEDULE

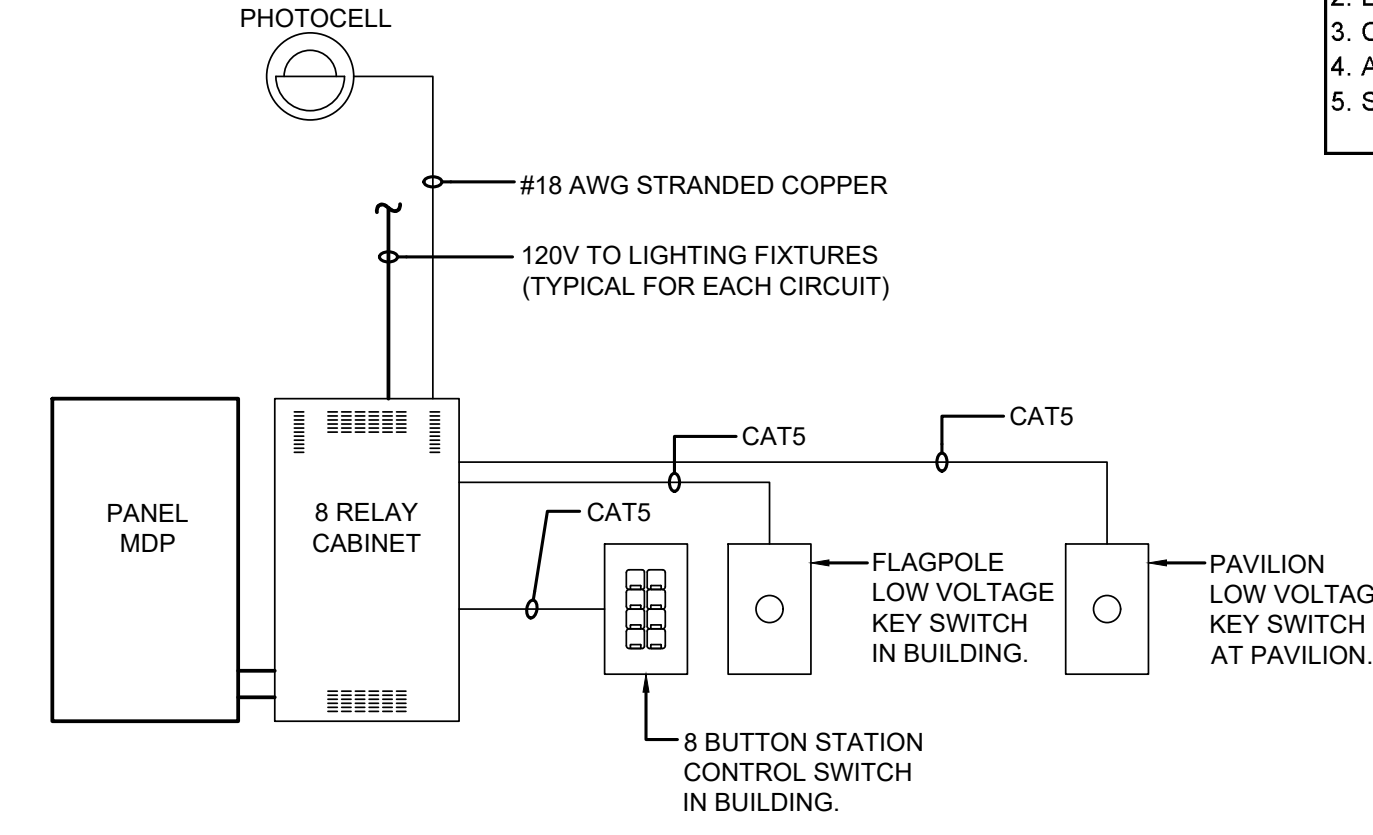
Table with columns: TYPE, SYMBOL, DESCRIPTION, MANUFACTURER, CATALOG NO., LAMPS, BALLAST, VOLTS, TOTAL WATTAGE, MOUNTING. Includes rows for pendant mounted exterior LED lighting, LED site lighting pole with type V distribution, and wall mounted exterior LED lighting fixture.

- NOTES: 1. ALL FIXTURES SHALL BE FURNISHED WITH UNIVERSAL OR MULTI-TAP DRIVERS. 2. REFER TO LIGHTING CONTROL DIAGRAM AND LIGHTING CONTROL ZONE SCHEDULE FOR FIXTURE CONTROLS.



TRANSFORMER MOUNTING PAD NOT TO SCALE

- NOTES: 1. GENERAL: ALL MATERIALS SHALL BE IN CONFORMITY WITH "ACI BUILDING CODE REQUIREMENTS FOR REINFORCED CONCRETE", LATEST EDITION. 2. PORTLAND CEMENT: APPROVED BRAND ASTM SPECIFICATIONS C-150 TYPE I, TO BE 4000 PSI AT 28 DAYS.



LIGHTING CONTROL DIAGRAM NOT TO SCALE

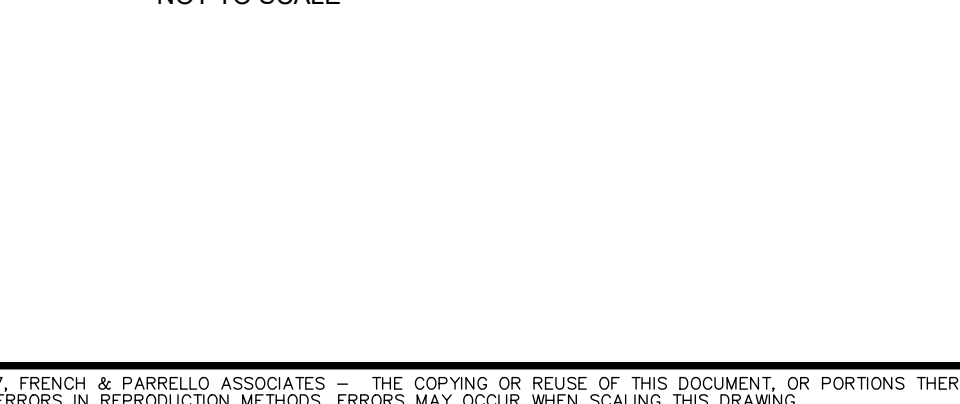
REFER TO PANEL SCHEDULE FOR ZONES

LIGHTING ZONE CONTROL SCHEDULE table with columns: ZONE, PHOTOCELL ON / TIMECLOCK OFF, MANUAL ON / MANUAL OFF.

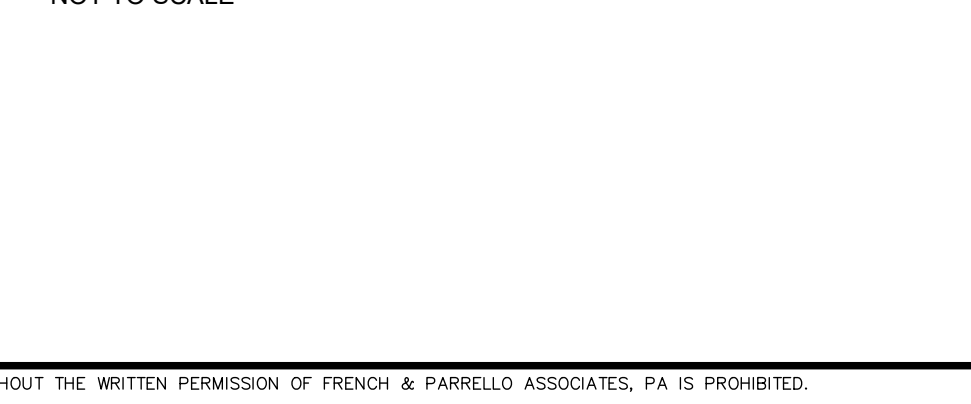
SYSTEM NOTES AND MATERIALS

- 1. #R08TC-100 GREENMAX RELAY CABINET, 8 RELAY SIZE, NEMA 1 SURFACE MOUNTED ENCLOSURE WITH LOCKING DOOR. 2. #RPM08-308 GREENMAX RELAY SYSTEM COMMAND MODULE COMPLETE WITH 70W POWER SUPPLY, MAIN PROCESSOR, LUMACAN3, WITH 8 LOW VOLTAGE INPUNTS.

PRIMARY SERVICE DUCTBANK NOT TO SCALE



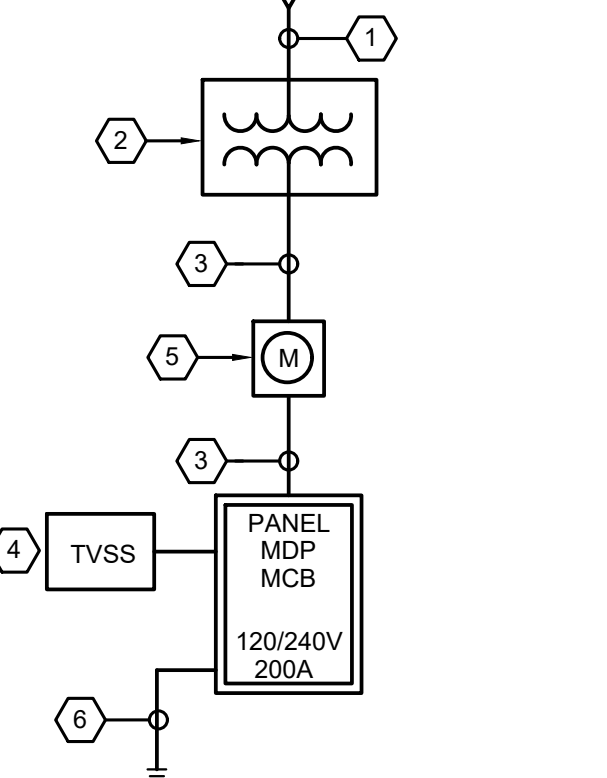
TYPICAL DIRECT BURIED DUCTBANK NOT TO SCALE



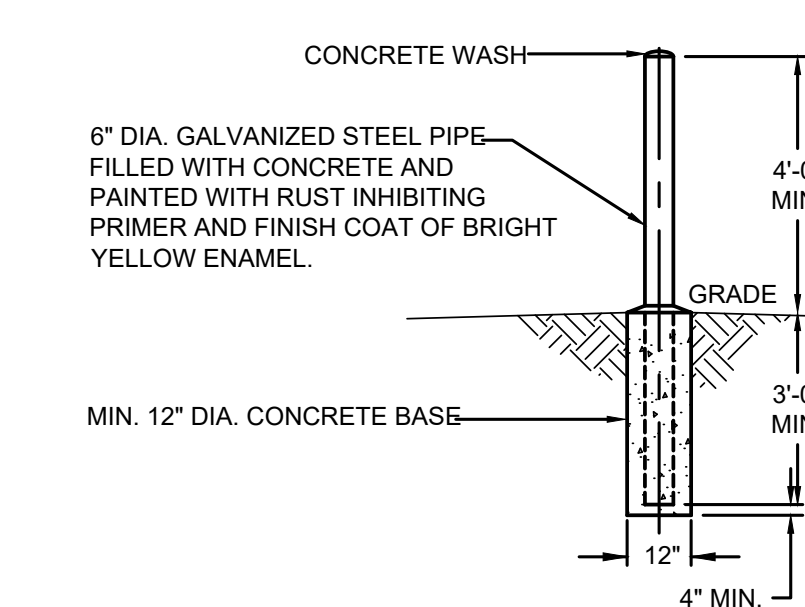
SINGLE LINE DIAGRAM KEY NOTES

- 1. OVERHEAD/UNDERGROUND PRIMARY SERVICE. WHERE BELOW GRADE, PROVIDE TWO (2) 5" EMPTY CONDUITS WITH DRAG LINES. 2. NEW PAD MOUNTED UTILITY COMPANY TRANSFORMER. INSTALL PAD PER JCP&L INSTALLATION INSTRUCTIONS.

SINGLE LINE DIAGRAM NOT TO SCALE



BOLLARD/BUMPER DETAIL NOT TO SCALE



ONE-LINE DIAGRAM DEVICE LEGEND

Table with columns: SYMBOLS, DESCRIPTION. Includes symbols for electrical panelboard, fuse, disconnect switch, fused disconnect switch, electrical meter, and utility transformer.

POWER DEVICE LEGEND

Table with columns: SYMBOLS, DESCRIPTION. Includes symbols for surface mounted panelboard, junction box, handhole/gradebox, motor, disconnect switch, NEMA 5-20R duplex receptacle, lighting fixture type, and photo cell.

ABBREVIATIONS

Table of abbreviations including A (AMPERE), AFF (ABOVE FINISHED FLOOR), AFG (ABOVE FINISHED GRADE), C (CONDUITS), CB (CIRCUIT BREAKER), CH (COUNTER HEIGHT), CO (CONDUIT ONLY), CT (CURRENT TRANSFORMER), CU (COPPER), EC (ELECTRICAL CONTRACTOR), EG (EQUIPMENT GROUND), EM (EMERGENCY), EMT (ELECTRICAL METALLIC TUBING), ETR (EXISTING TO REMAIN), EWC (ELECTRIC WATER COOLER), FA (FIRE ALARM), FBO (FURNISHED BY OTHERS), GFI (GROUND FAULT INTERRUPTER), GND, G (GROUND), IC (INTER interrupting CAPACITY), IG (ISOLATED GROUND), IL (INTERLOCKED), MC (MECHANICAL CONTRACTOR), MC (MECHANICAL CONTRACTOR), MOD (MOTOR OPERATED DAMPER), NIC (NOT IN CONTRACT), NT (NIGHT LIGHT), NTS (NOT TO SCALE), RGS (RIGID GALVANIZED STEEL), SPD (SURGE PROTECTIVE DEVICE), TVSS (TRANSIENT VOLTAGE SURGE SUPPRESSOR), TIC (TIME CLOCK), UNON (UNLESS OTHERWISE NOTED), V (VOLTS), W (WALL MOUNTED), WP (WEATHERPROOF).

SYMBOL LIST NOTES

- 1. SYMBOLS ARE INDICATED FOR GENERAL REFERENCE ONLY. THE PRESENCE OF A SYMBOL DOES NOT INDICATE ITS USE ON THIS PROJECT. REFER TO PLAN DRAWINGS FOR SPECIFIC SYMBOLS USED.

APPLICABLE CODES:

- ALL WORK SHALL BE IN STRICT ACCORDANCE WITH THE LATEST CODES AND SUBCODES AS ADOPTED BY THE STATE OF NEW JERSEY: 1. NEW JERSEY UNIFORM CONSTRUCTION CODE (NUCC) 2. 2015 INTERNATIONAL BUILDING CODE - NJ EDITION 3. 2014 NATIONAL ELECTRICAL CODE 4. 2013 ASHRAE 90.1 ENERGY CONSERVATION CODE 5. REQUIREMENTS OF LOCAL AUTHORITY HAVING JURISDICTION.

Table with columns: No., Date, Revision, Revised By, Checked By. Includes a scale bar in feet.



Corporate Office 1800 Route 34, Suite 101 Wall, NJ 07719 732.312.8600 Regional Offices Hackettstown, NJ New York, NY

ELECTRIC SYMBOLS, NOTES, ABBREVIATIONS, SCHEDULES & ONE LINE DIAGRAM

FOR CALAIS ROAD PARK LOTS 2 & 3 BLOCK 49 TOWNSHIP OF RANDOLPH MORRIS COUNTY NEW JERSEY

Table with columns: DATE, DESIGNED BY, SCALE, PROJECT NUMBER. Includes drawing details like DATE: 05/15/2018, DESIGNED BY: AMP, SCALE: AS NOTED, PROJECT NUMBER: 12259-001.