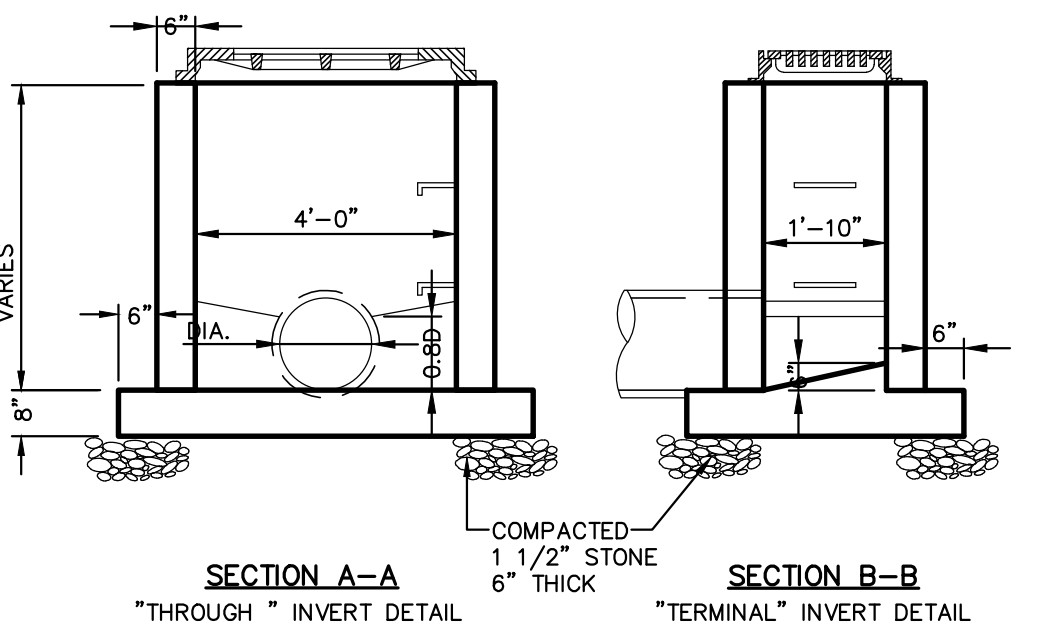
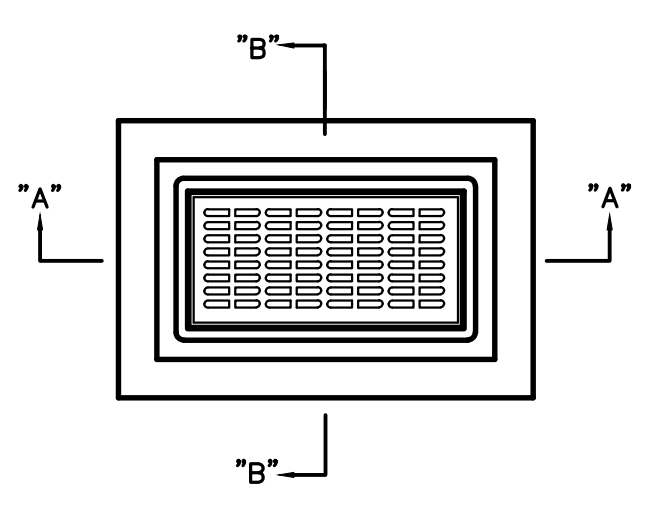
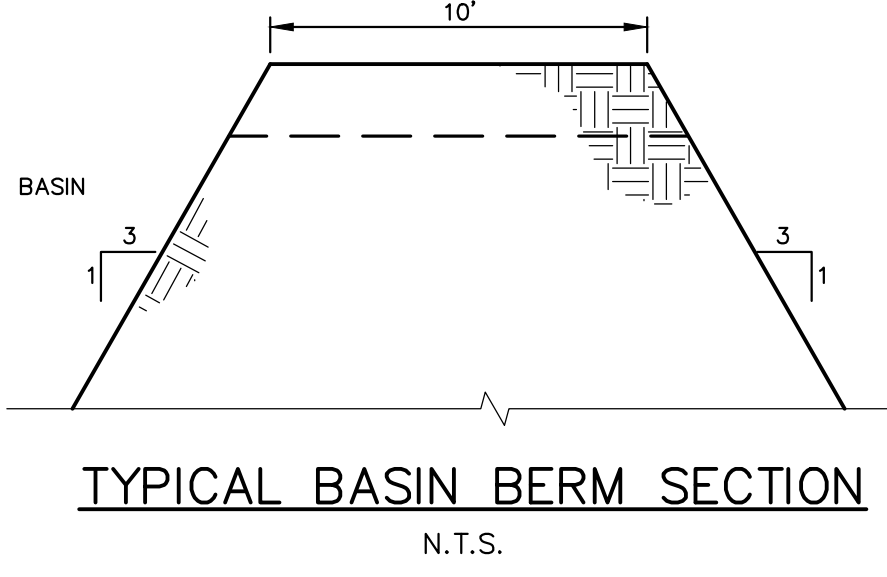


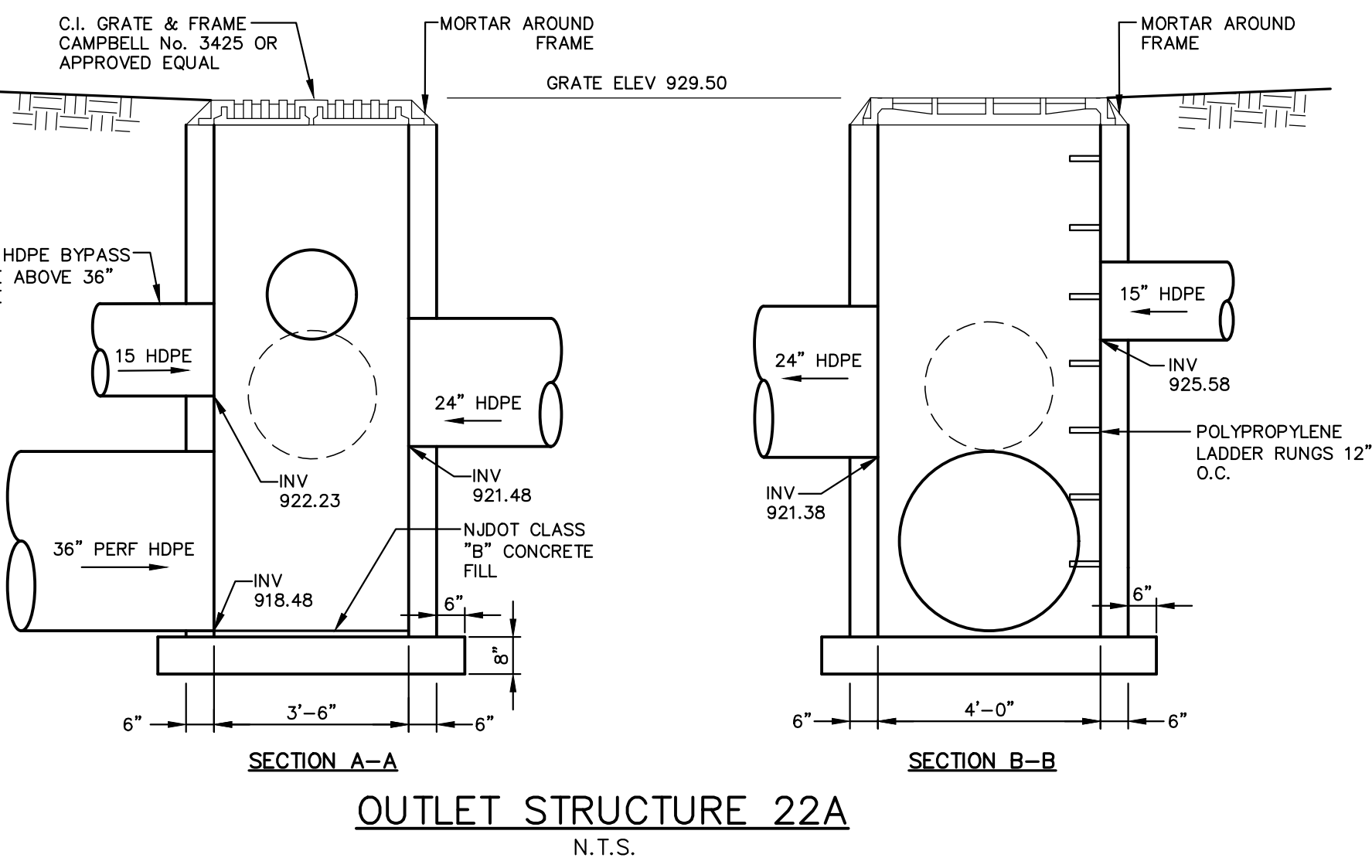
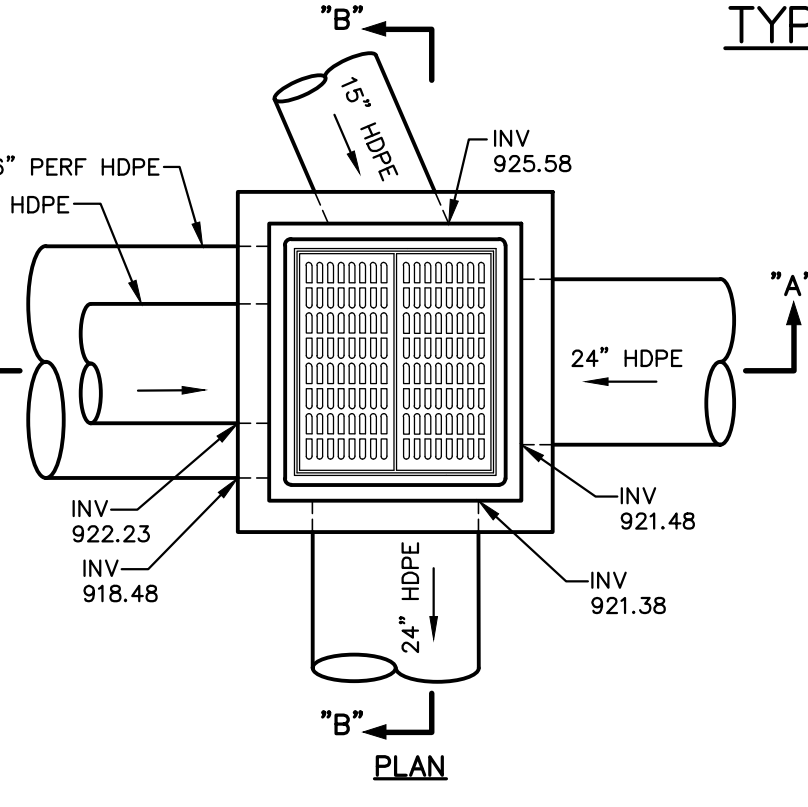
- GENERAL NOTES:**
1. FOOTING TO BE N.J.D.O.T., CLASS "B"
 2. INVERT TO BE CLASS "B"
 3. IF WALL CONSTRUCTION IS OTHER THAN PRECAST CONCRETE, THE WALLS SHALL BE PLASTERED BOTH INSIDE AND OUTSIDE WITH 1/2" THICK CEMENT PLASTER
 4. FRAME AND GRATE TO BE NO. 3425 AS MANUFACTURED BY CAMPBELL FOUNDRY CO. OR APPROVED EQUAL.
 5. PROVIDE POLYPROPYLENE LADDER RUNGS 12" O.C.
 6. WHEN ADDITIONAL DEPTH IS SCHEDULED WALLS BELOW THE DEPTH OF 8'-0" MEASURED FROM THE INLET CUTTER TO THE INVERT, SHALL BE 12" THICK. THE FOUNDATION DIMENSIONS SHALL BE INCREASED TO 12" WIDTH AND TO 12" IN DEPTH.



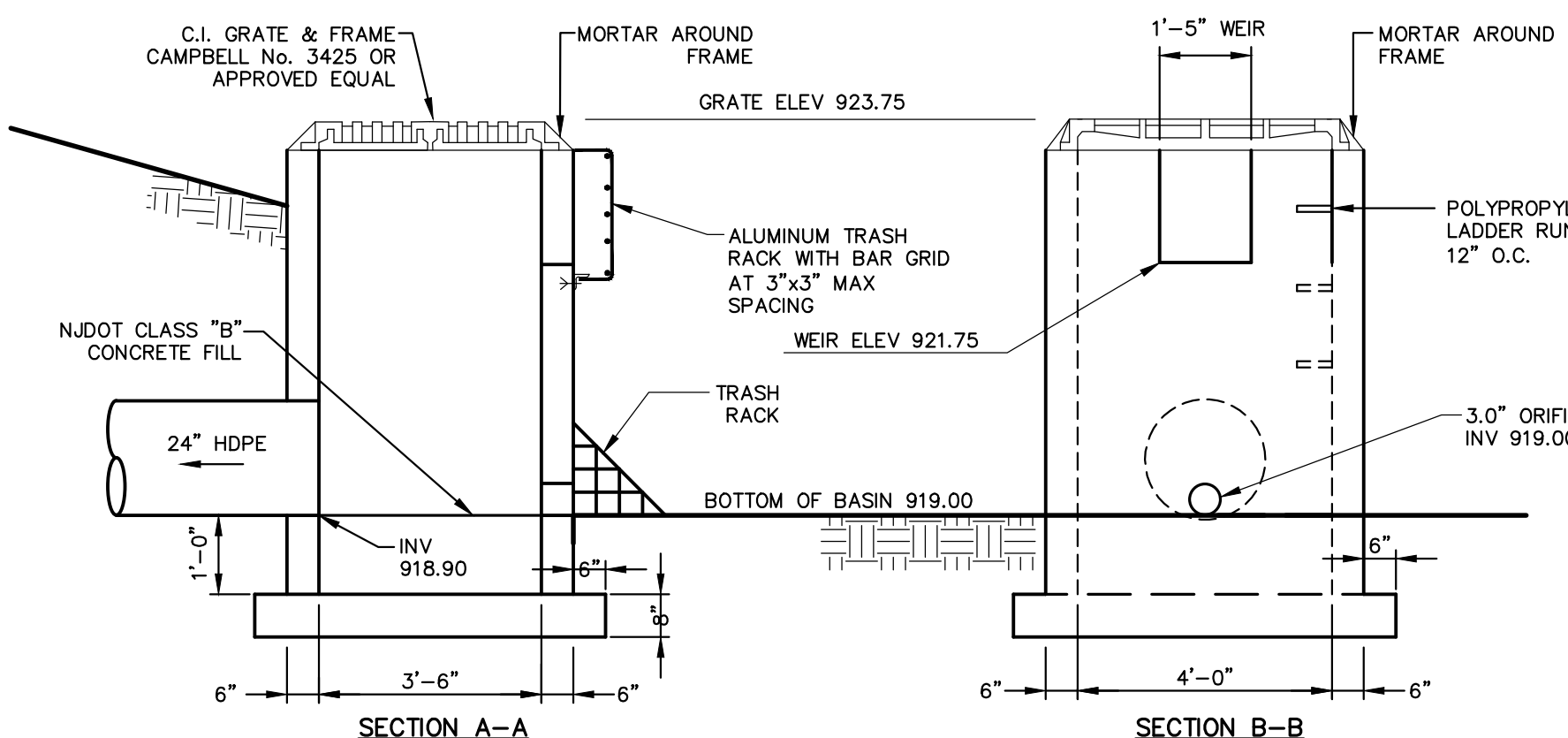
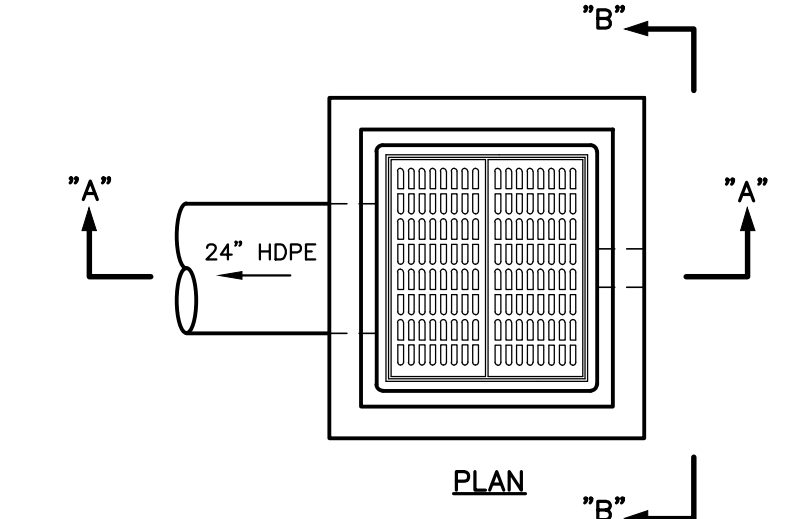
TYPE "A" INLET
WITH BICYCLE GRATE
N.T.S.



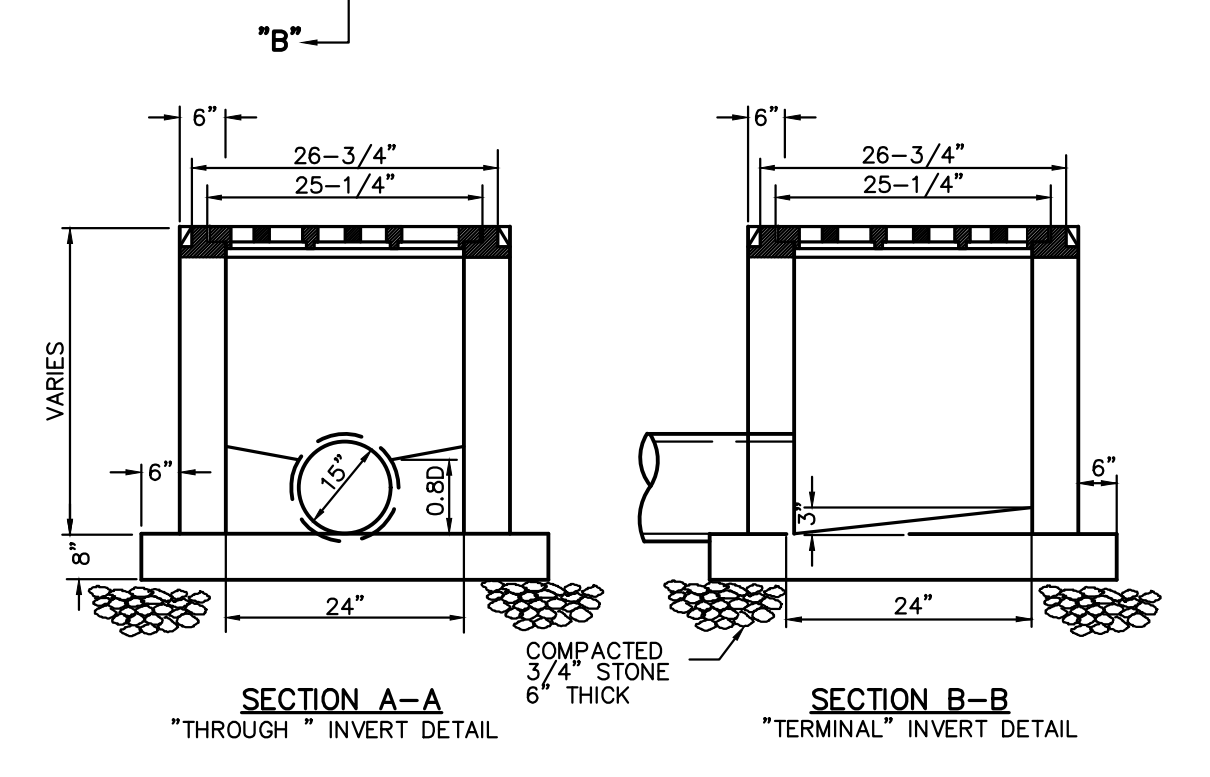
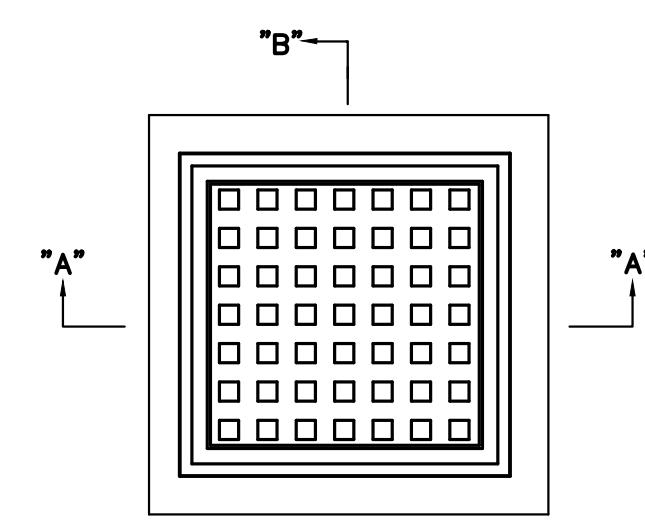
TYPICAL BASIN BERM SECTION
N.T.S.



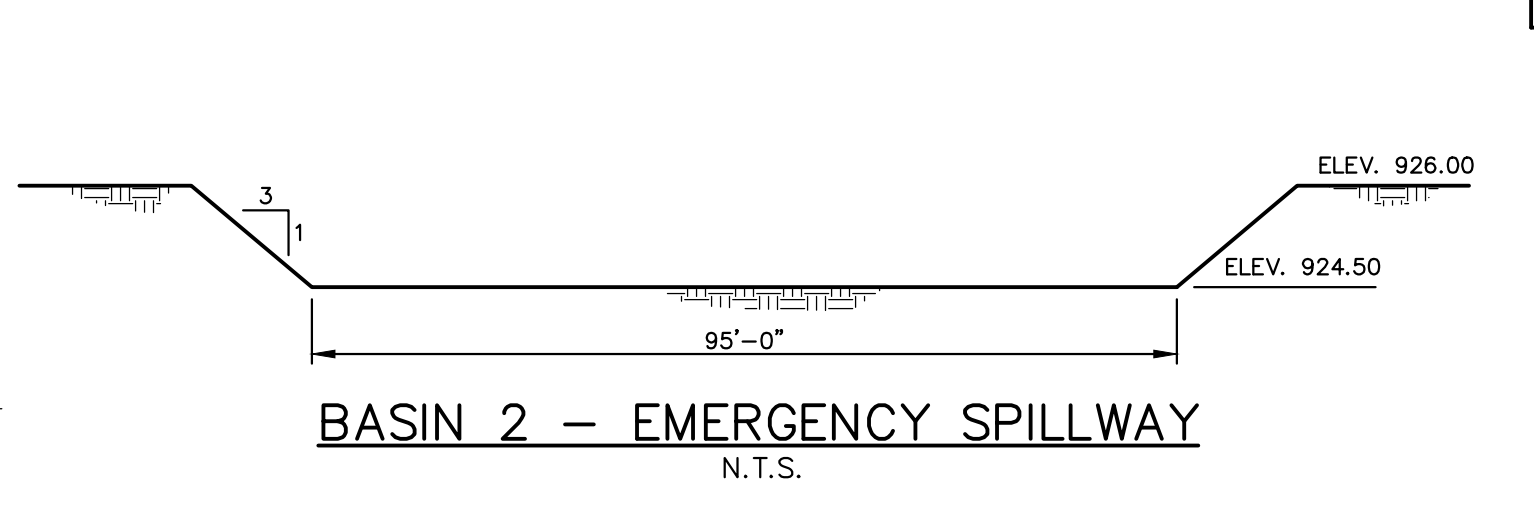
OUTLET STRUCTURE 22A
N.T.S.



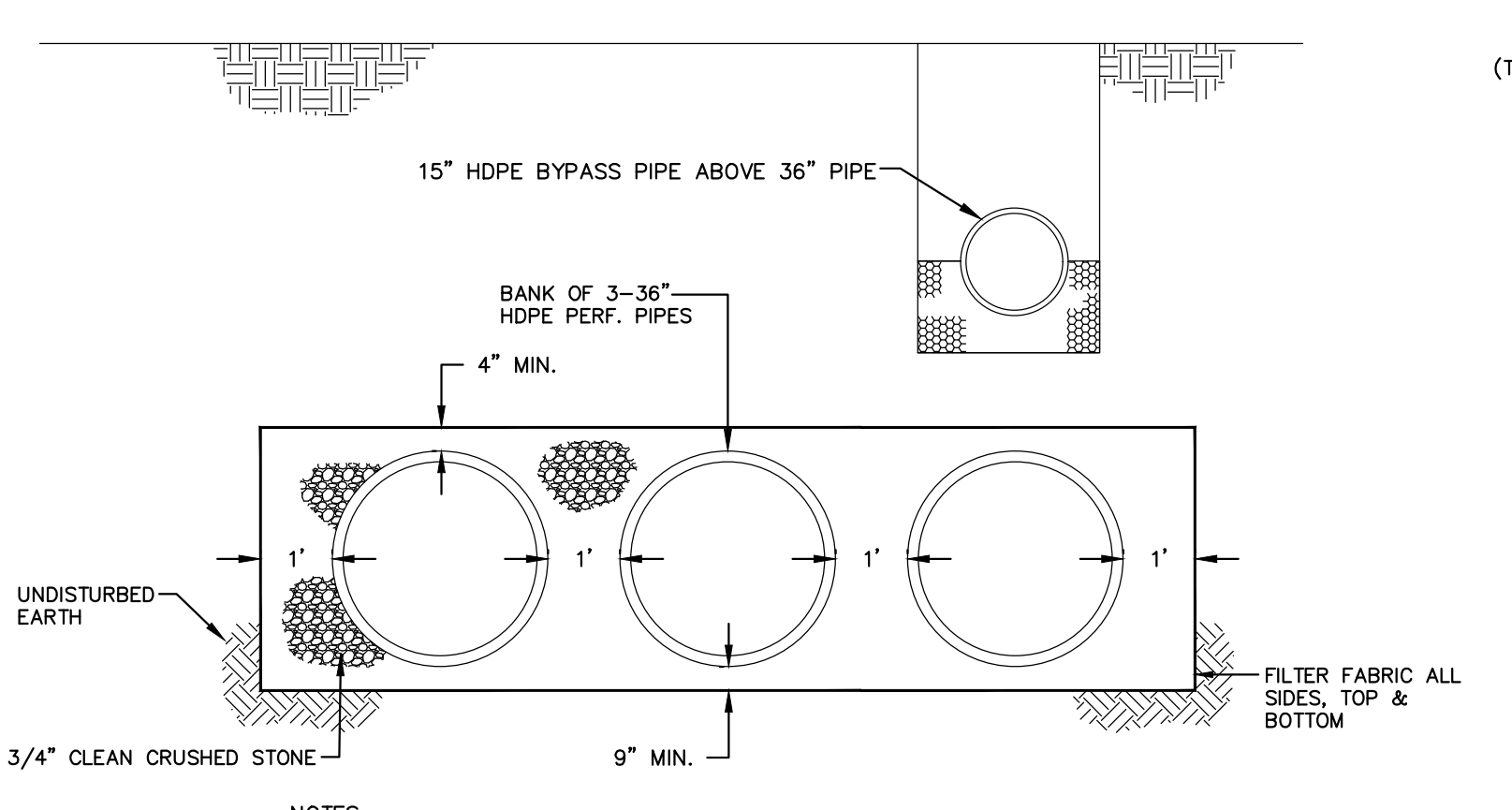
OUTLET STRUCTURE 24
N.T.S.



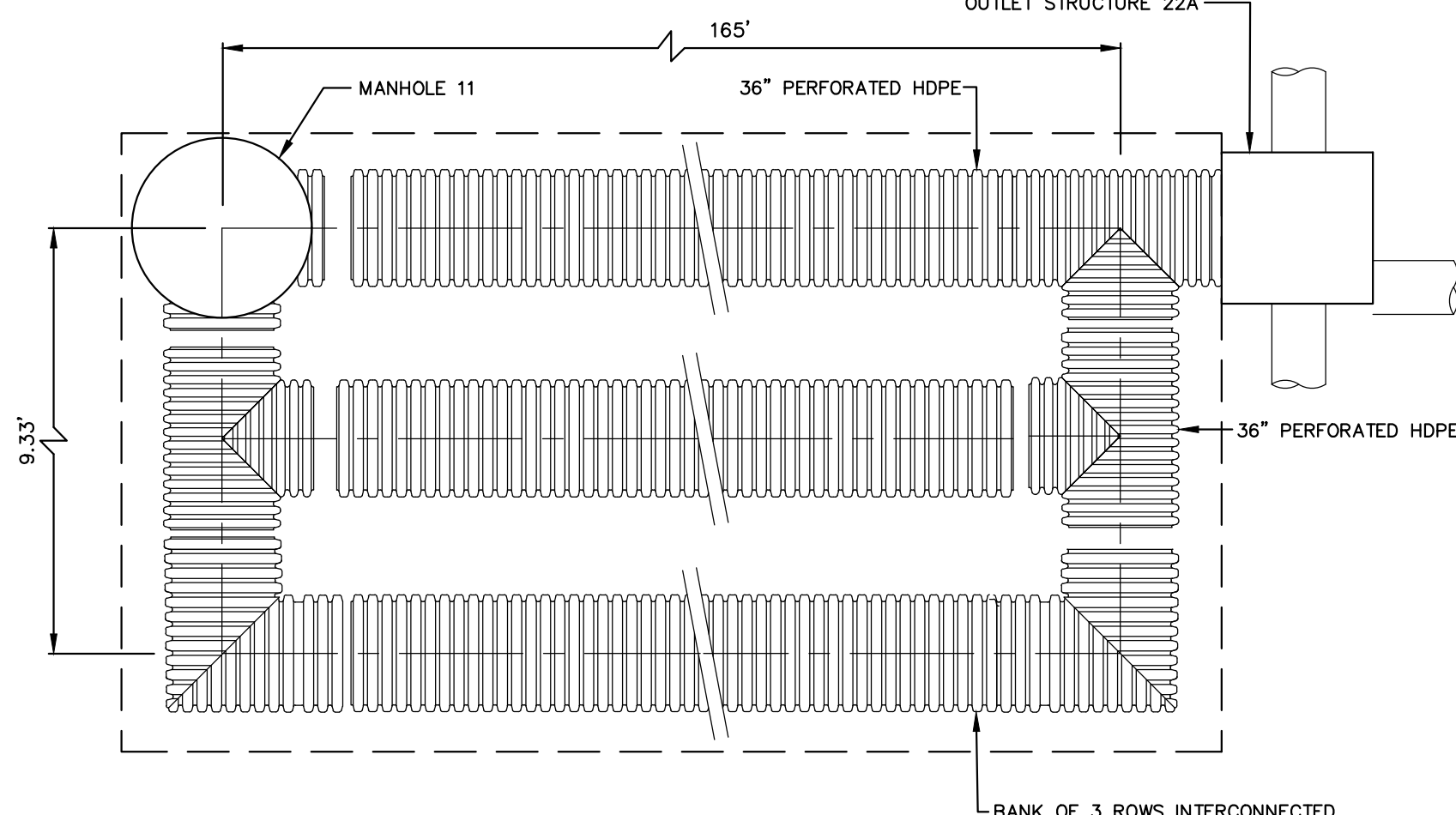
YARD INLET DETAIL
N.T.S.



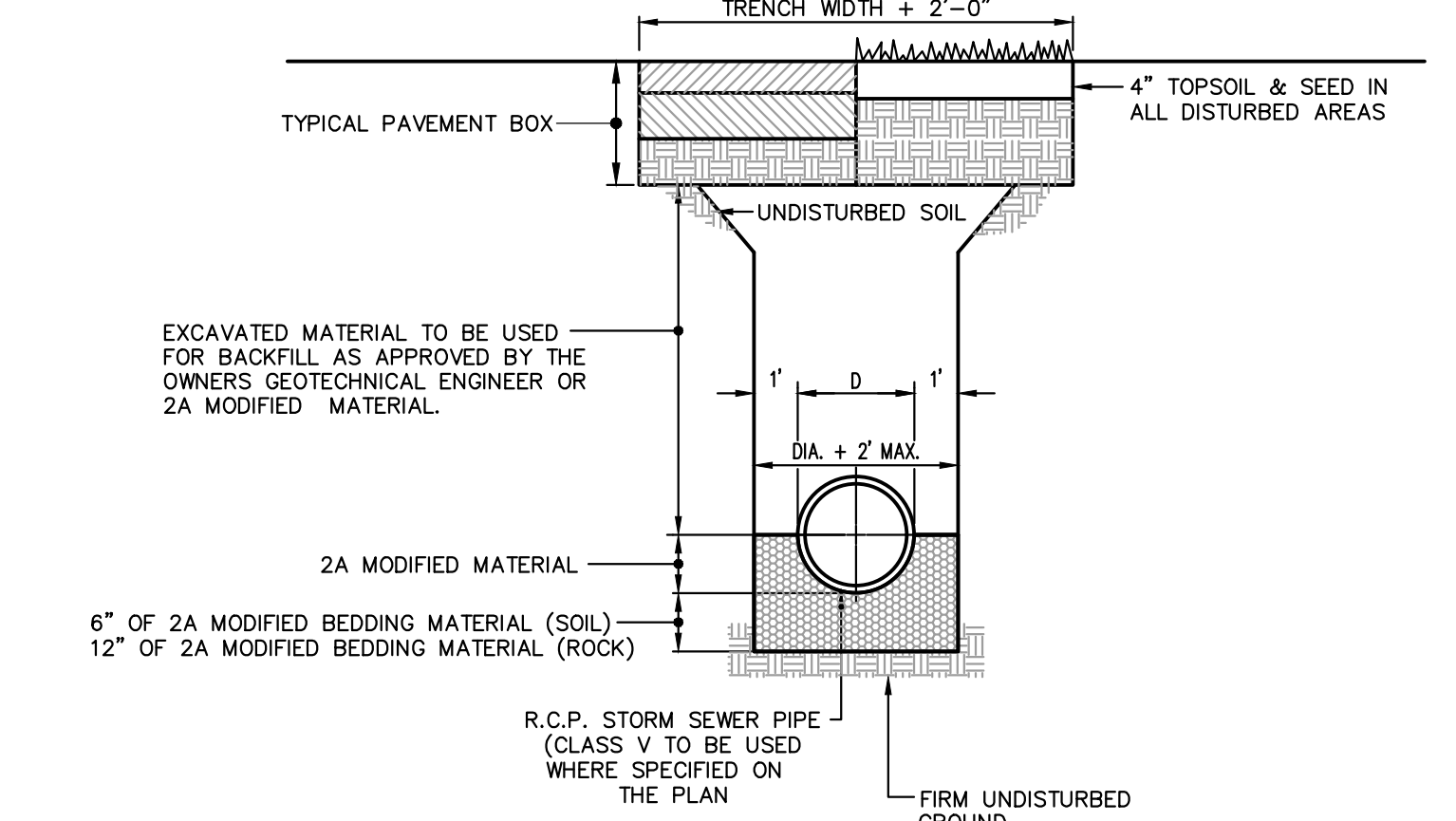
BASIN 2 - EMERGENCY SPILLWAY
N.T.S.



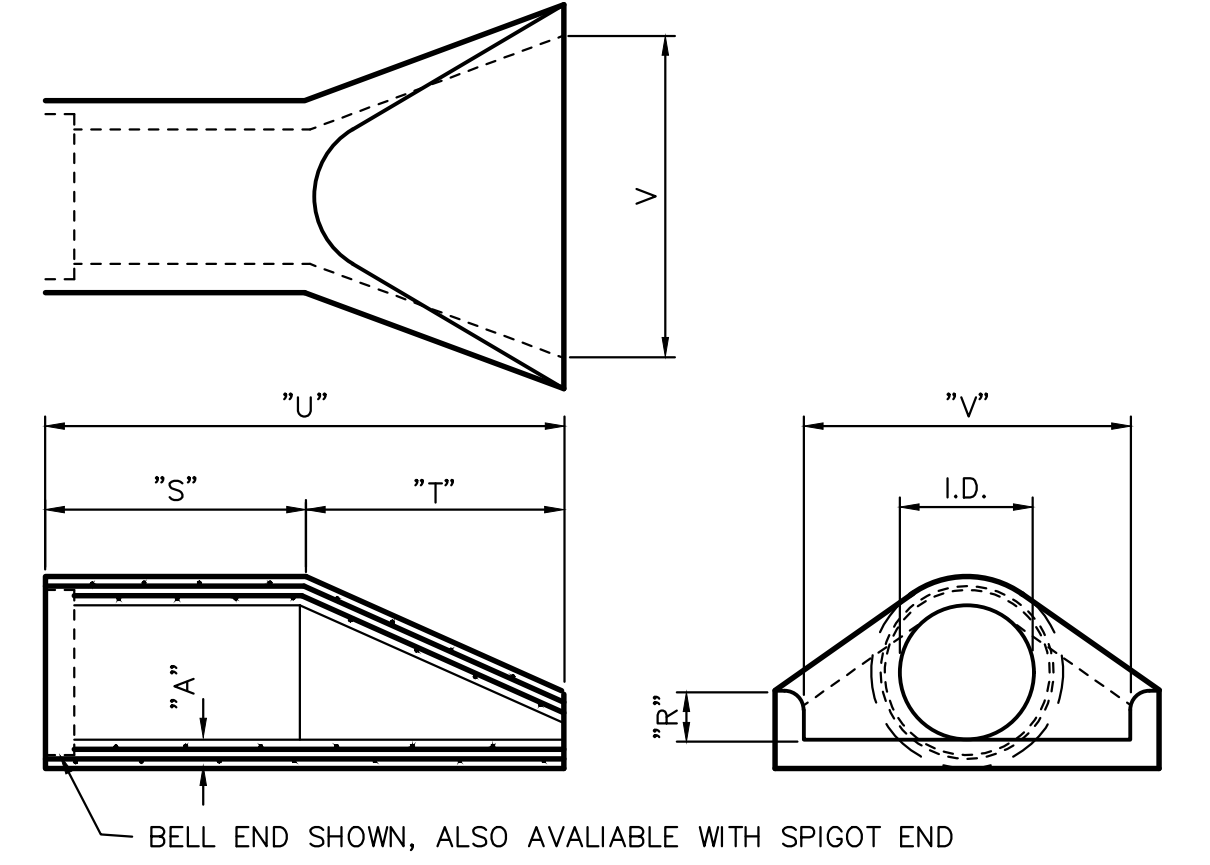
RECHARGE TRENCH CROSS SECTION
N.T.S.



RECHARGE TRENCH LAYOUT
N.T.S.

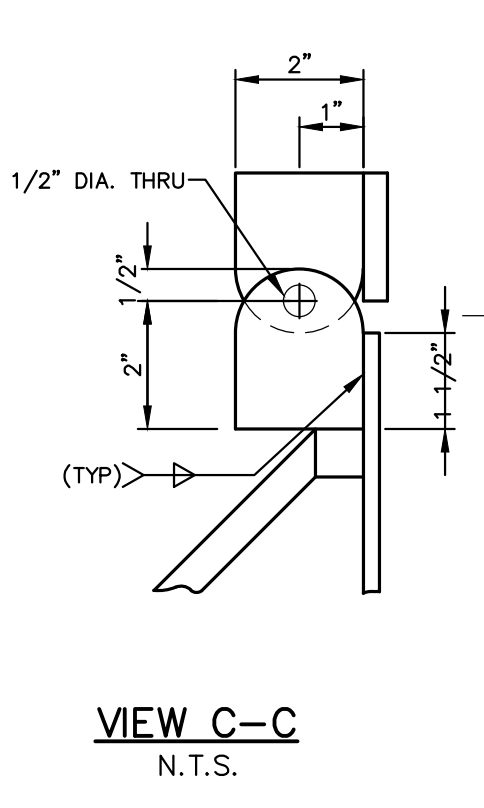


STORM SEWER TRENCH DETAIL
N.T.S.

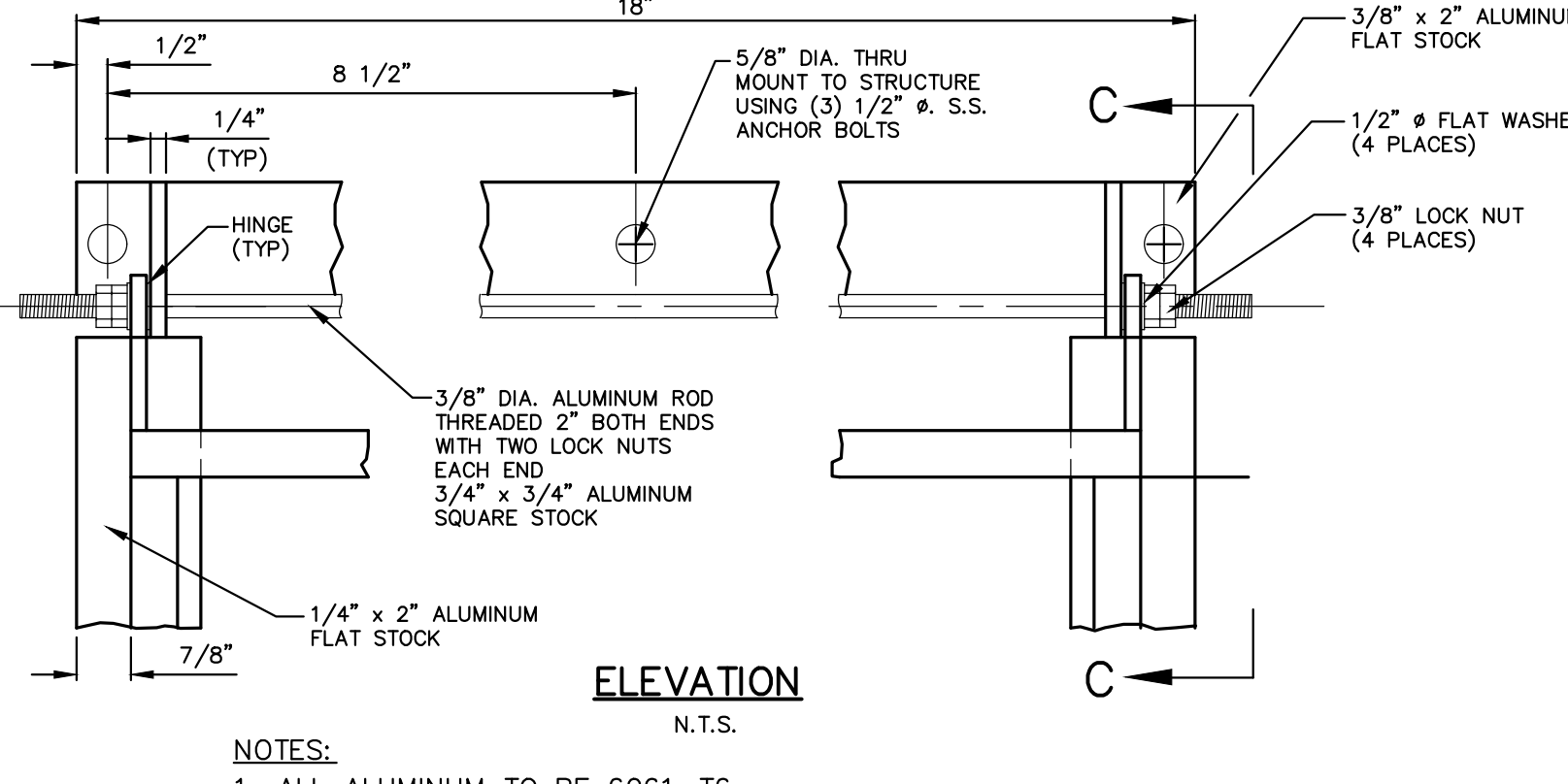


FLARED END SECTION
NOT TO SCALE

PIPE SIZE	
I.D.	WT/FT
12"	360
15"	480
18"	640
21"	860
24"	920
27"	1200
30"	1540
36"	2100
42"	5500
48"	6500
54"	8200
60"	9300

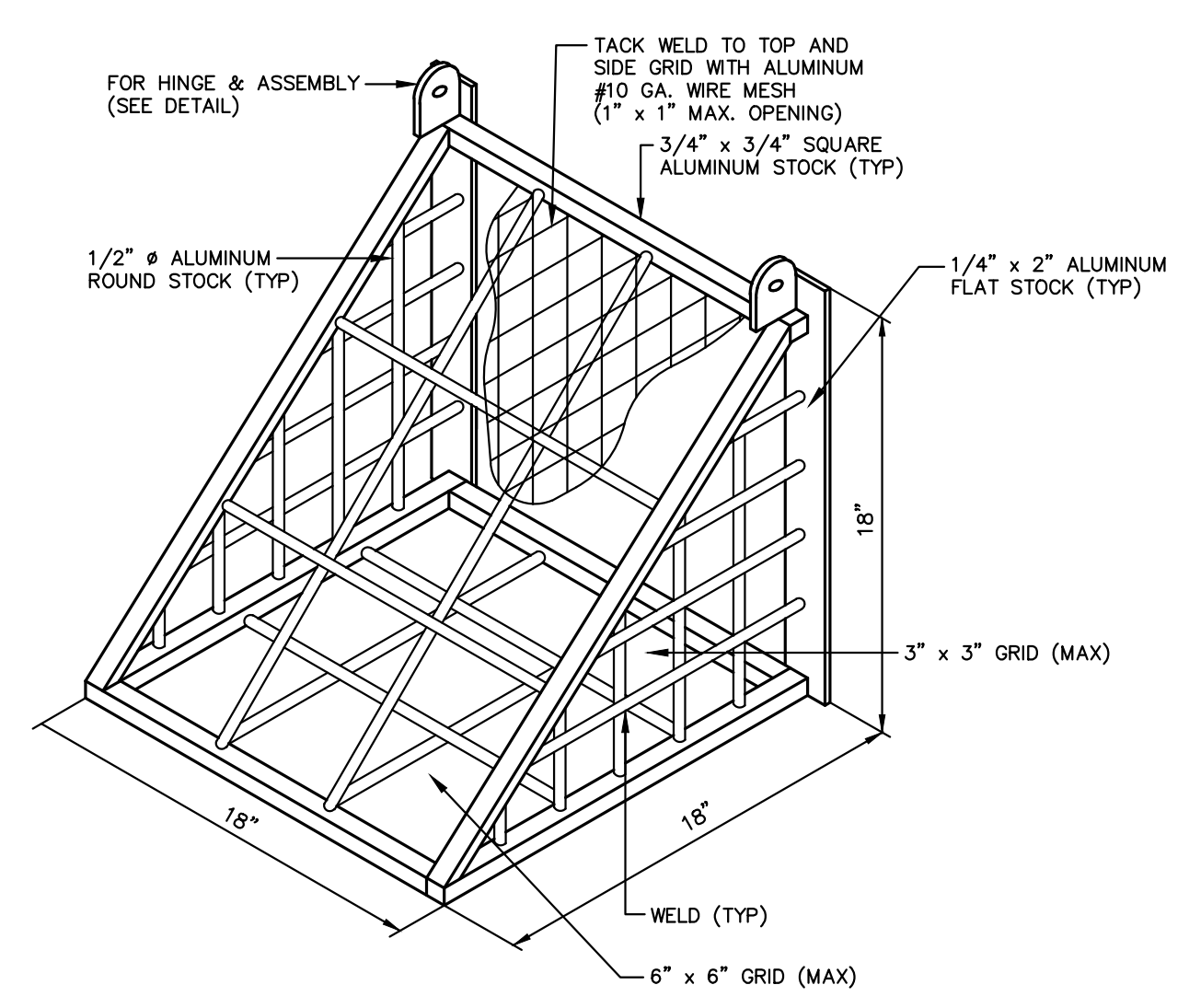


VIEW C-C
N.T.S.

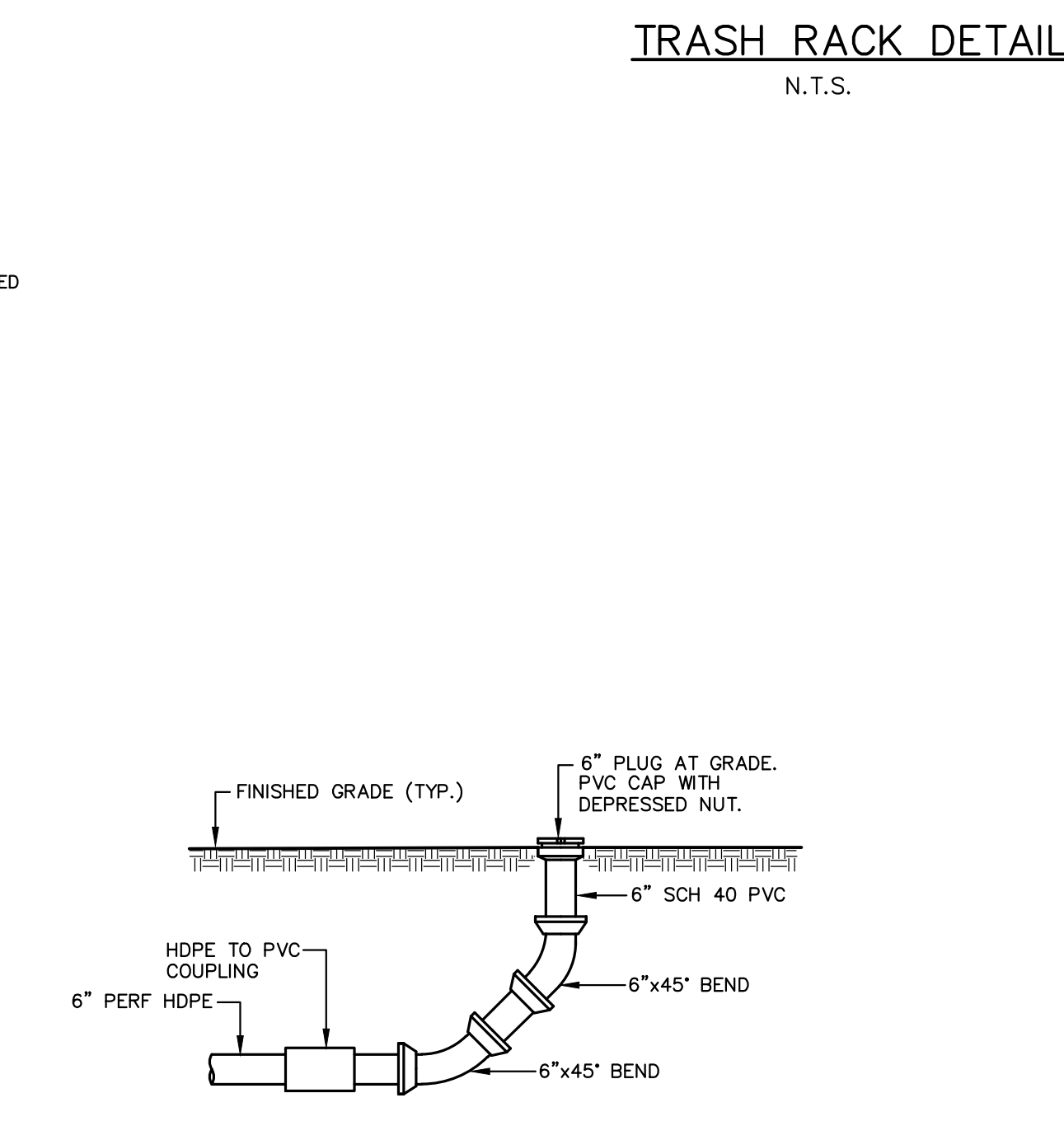


ELEVATION
N.T.S.

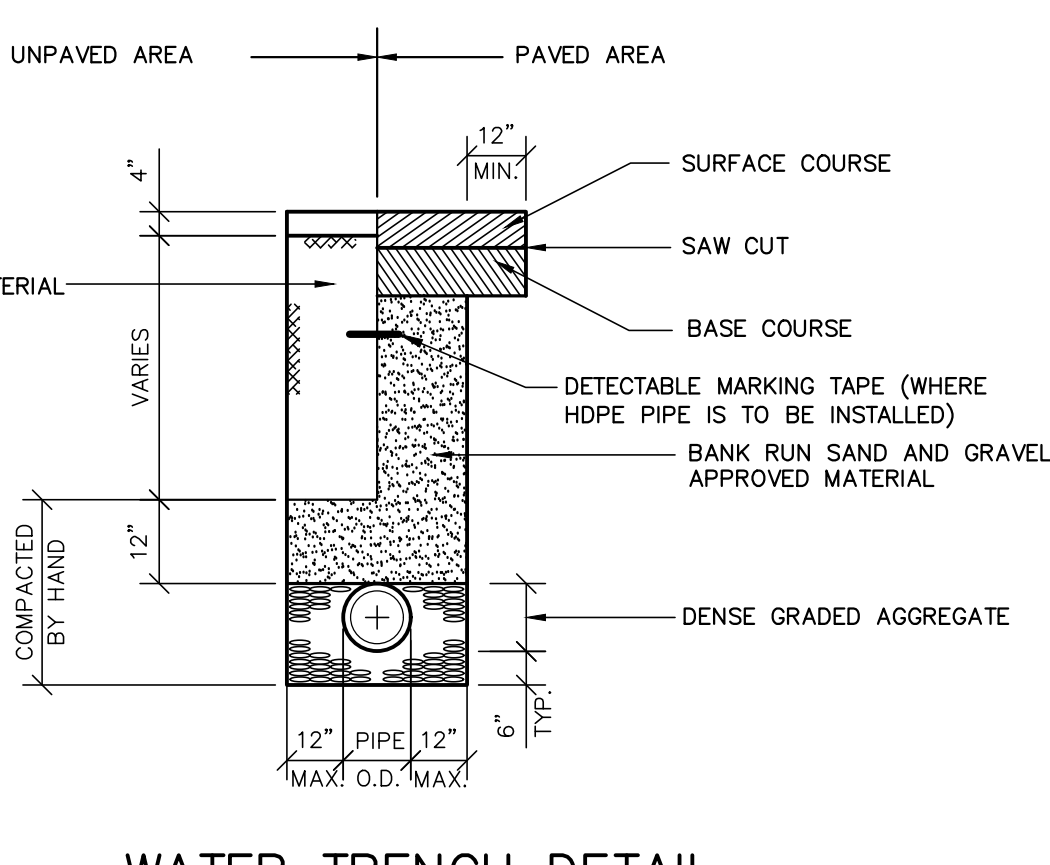
TRASH RACK HINGE AND HINGE ASSEMBLY DETAIL
N.T.S.



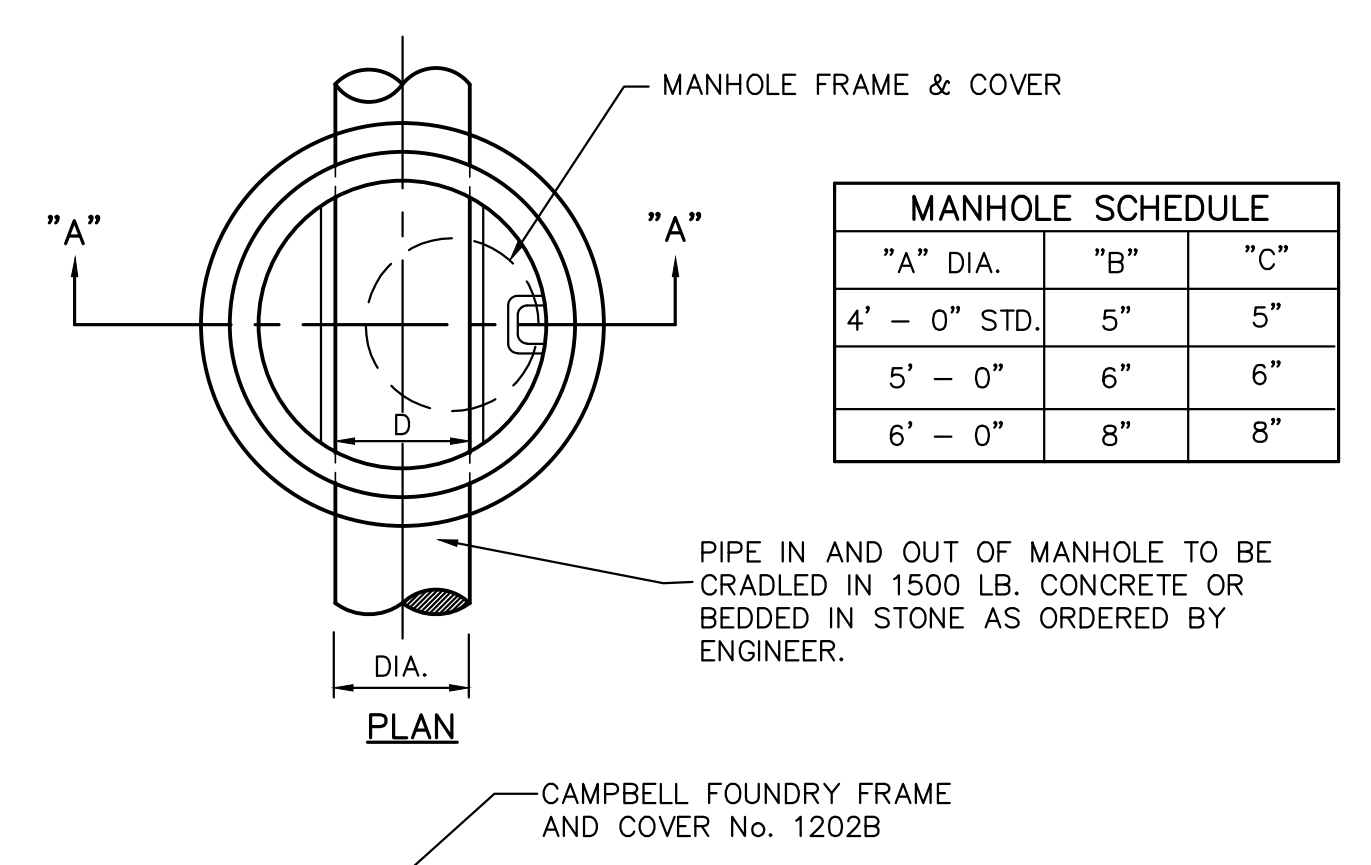
TRASH RACK DETAIL
N.T.S.



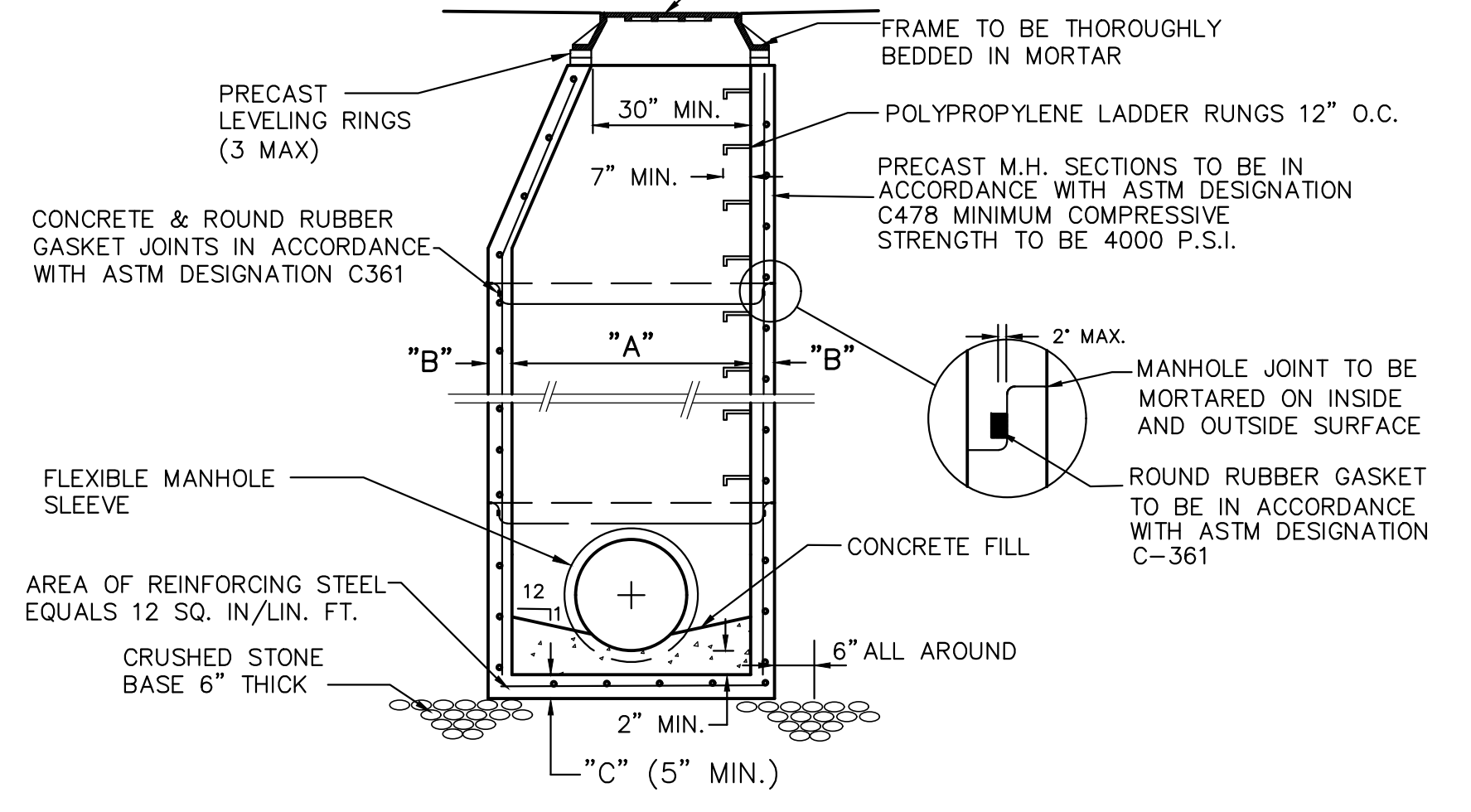
TYPICAL CLEANOUT AT BIORETENTION SWALE DETAIL
NOT TO SCALE



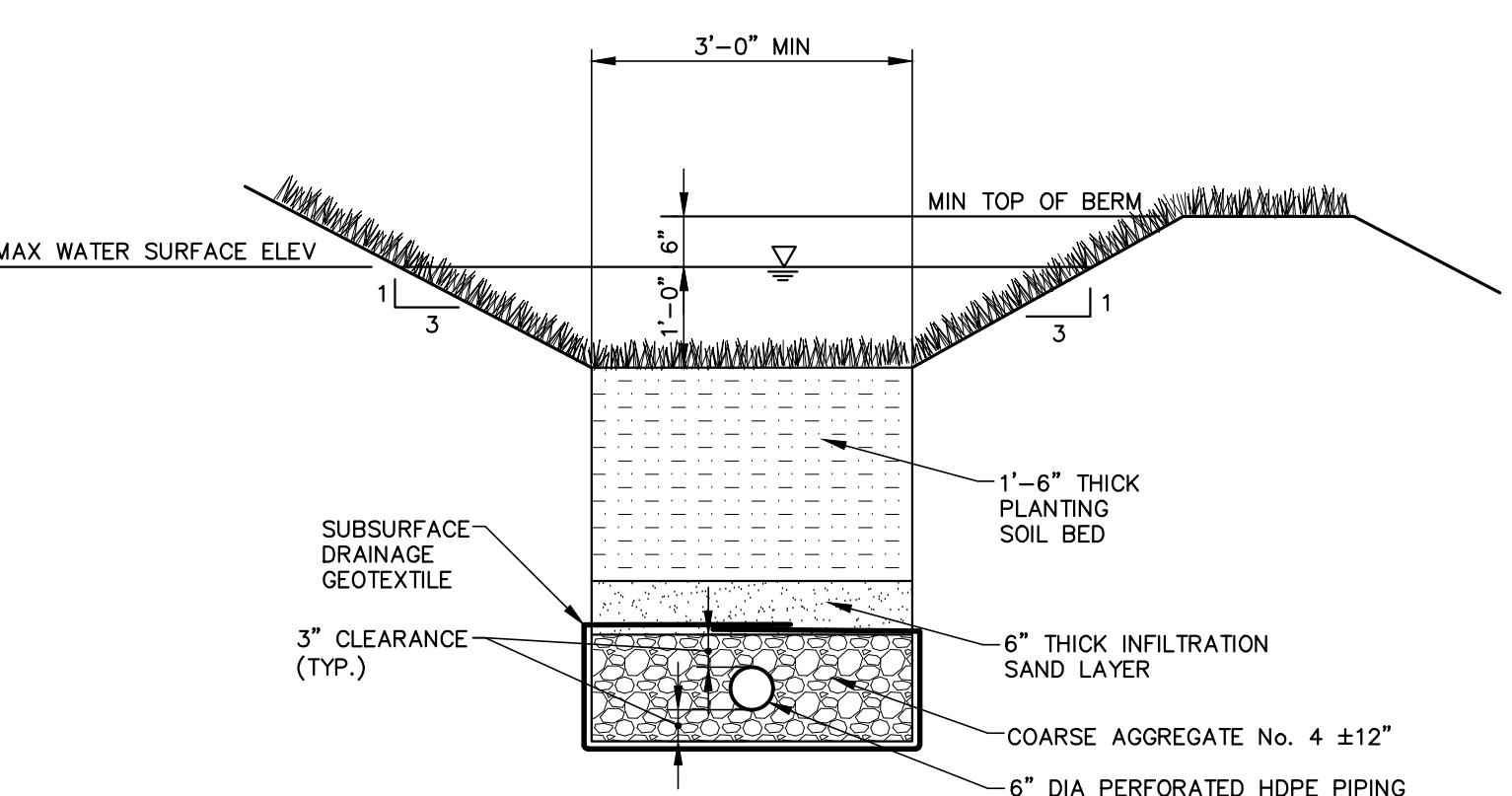
WATER TRENCH DETAIL
NOT TO SCALE



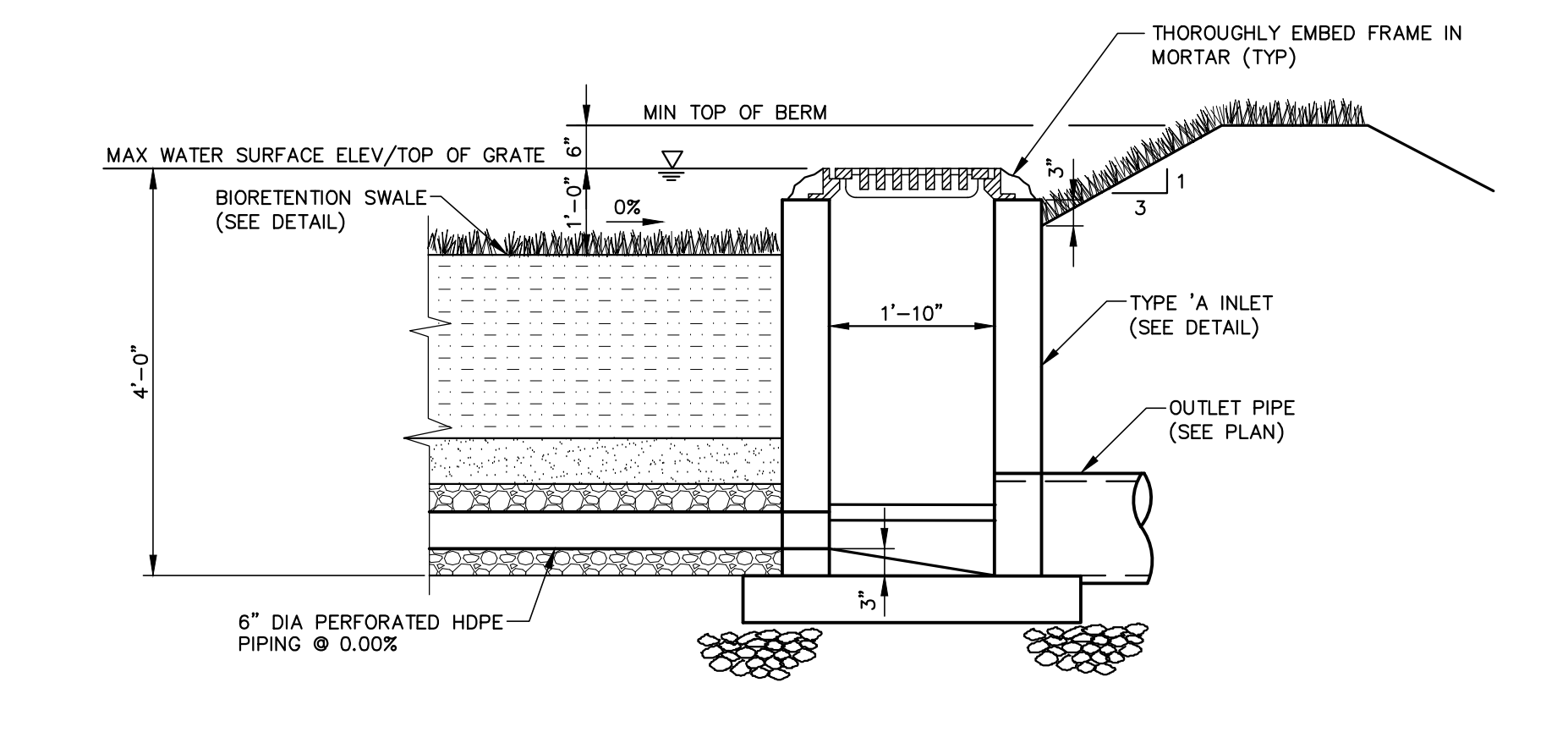
MANHOLE SCHEDULE		
"A" DIA.	"B"	"C"
4' - 0"	5"	5"
5' - 0"	6"	6"
6' - 0"	8"	8"



PRECAST STORM MANHOLE
N.T.S.



TYPICAL BIORETENTION SWALE SECTION
NOT TO SCALE



TYPICAL BIORETENTION SWALE OUTLET
NOT TO SCALE

No.	Date	Revision	By	Checked By
1	05/07/18	ISSUED FOR BID	SKW	DFK
2	03/26/18	PER NDEP COMMENTS	SKW	DFK
3	03/12/18	PER NDEP COMMENTS	SKW	DFK
4	02/14/18	PER NDEP COMMENTS	SKW	DFK

FPA
FRENCH & PARRELO ASSOCIATES

Hackettstown Office
43A Newburgh Rd, Suite 100
Hackettstown, NJ 07840
908-850-9077

Offices
Corporate - Wall, NJ
New York, NY

DENIS F. KEENAN, P.E.
PROFESSIONAL ENGINEER - N.J. LIC. NO. 46373

CONSTRUCTION DETAILS

FOR
CALAIS ROAD PARK
LOTS 2 & 3 BLOCK 49

TOWNSHIP OF RANDOLPH
MORRIS COUNTY
NEW JERSEY

DATE: 01/03/2018
DESIGNED BY: RJB
CHECKED BY: SKW

SCALE: AS NOTED
FIELD BOOK

PROJECT NUMBER: 12259.001
SHEET: 17 of 23

G:\V2K\12259\12259 - Randolph - Calais Recreation Complex\Draw\12259-001-CD1.dwg, DETAIL 2