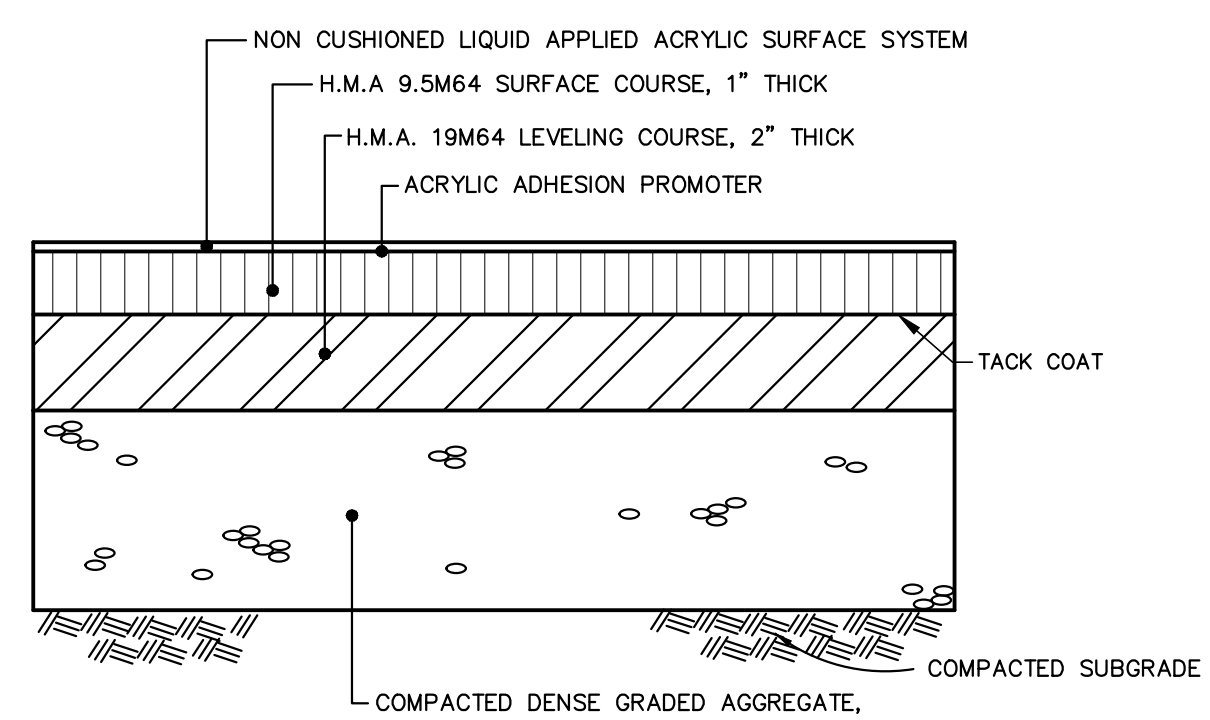
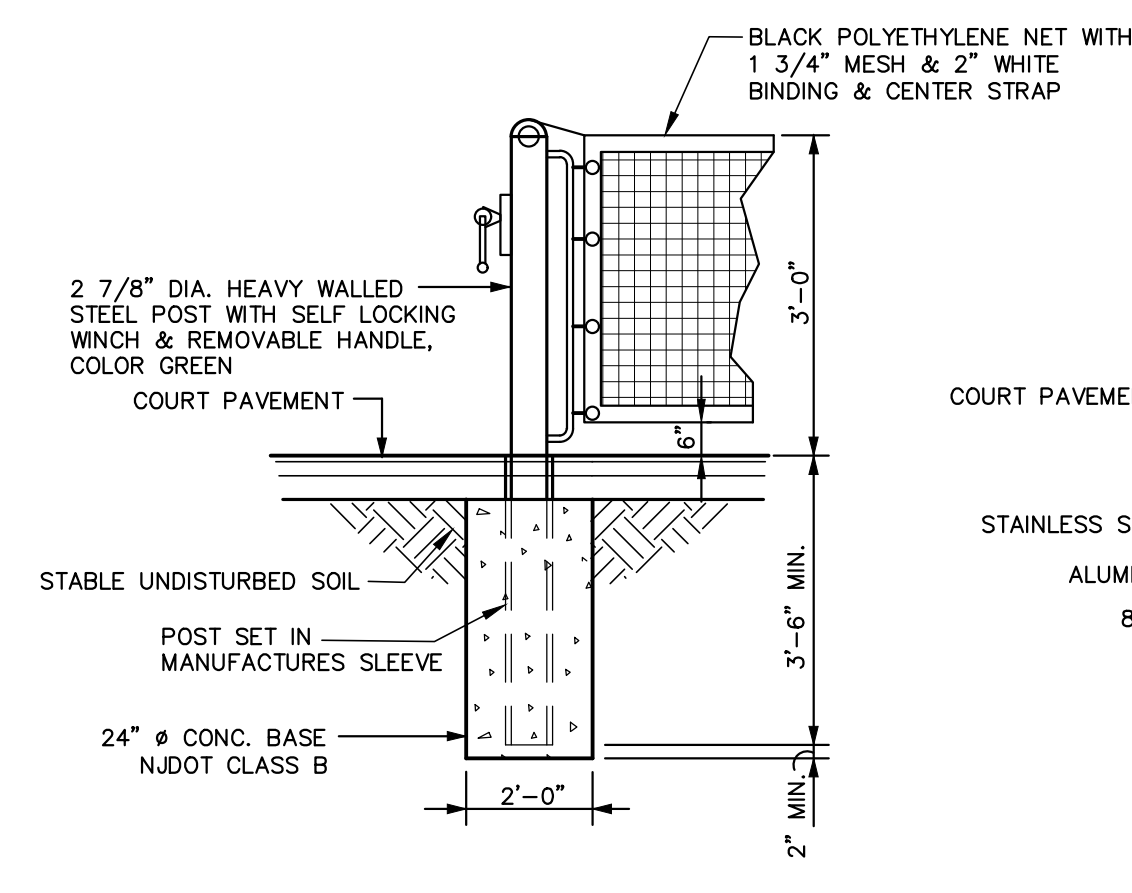


PICKLEBALL COURT DETAIL
NOT TO SCALE

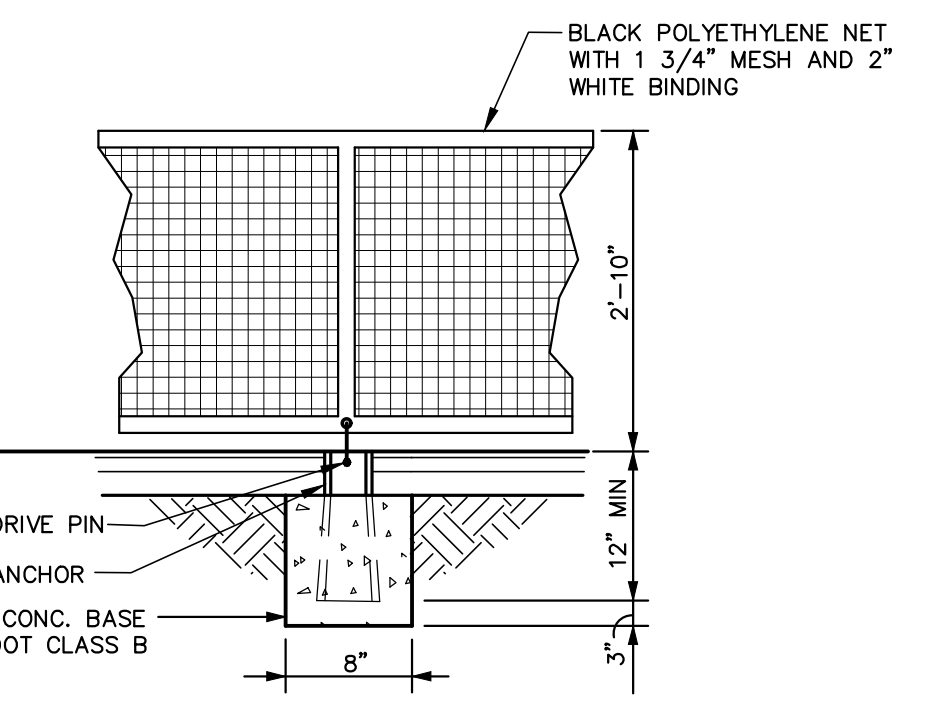
NOTE:
1. ALL DIMENSIONS ARE TO THE OUTSIDE OF THE LINES & SHOULD CONFORM TO USAPA STANDARDS.
2. NET & POST MATERIAL & DIMENSIONS TO CONFORM TO USAPA STANDARDS.
3. COURT SURFACE COLORS TO BE REVIEWED AND APPROVED BY THE ENGINEER.



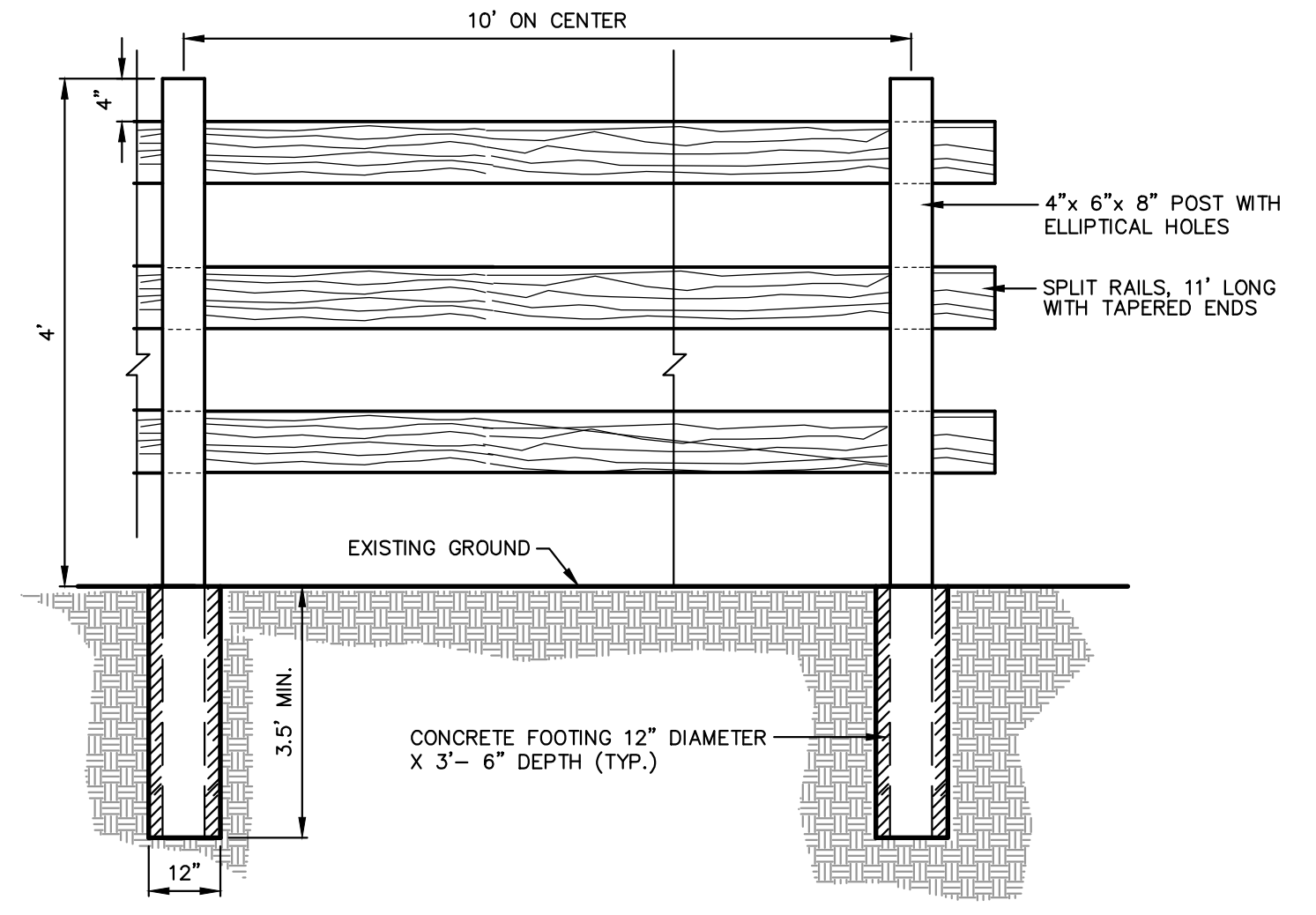
PICKLEBALL COURT SECTION
N.T.S.



NEST POST FOOTING
NOT TO SCALE

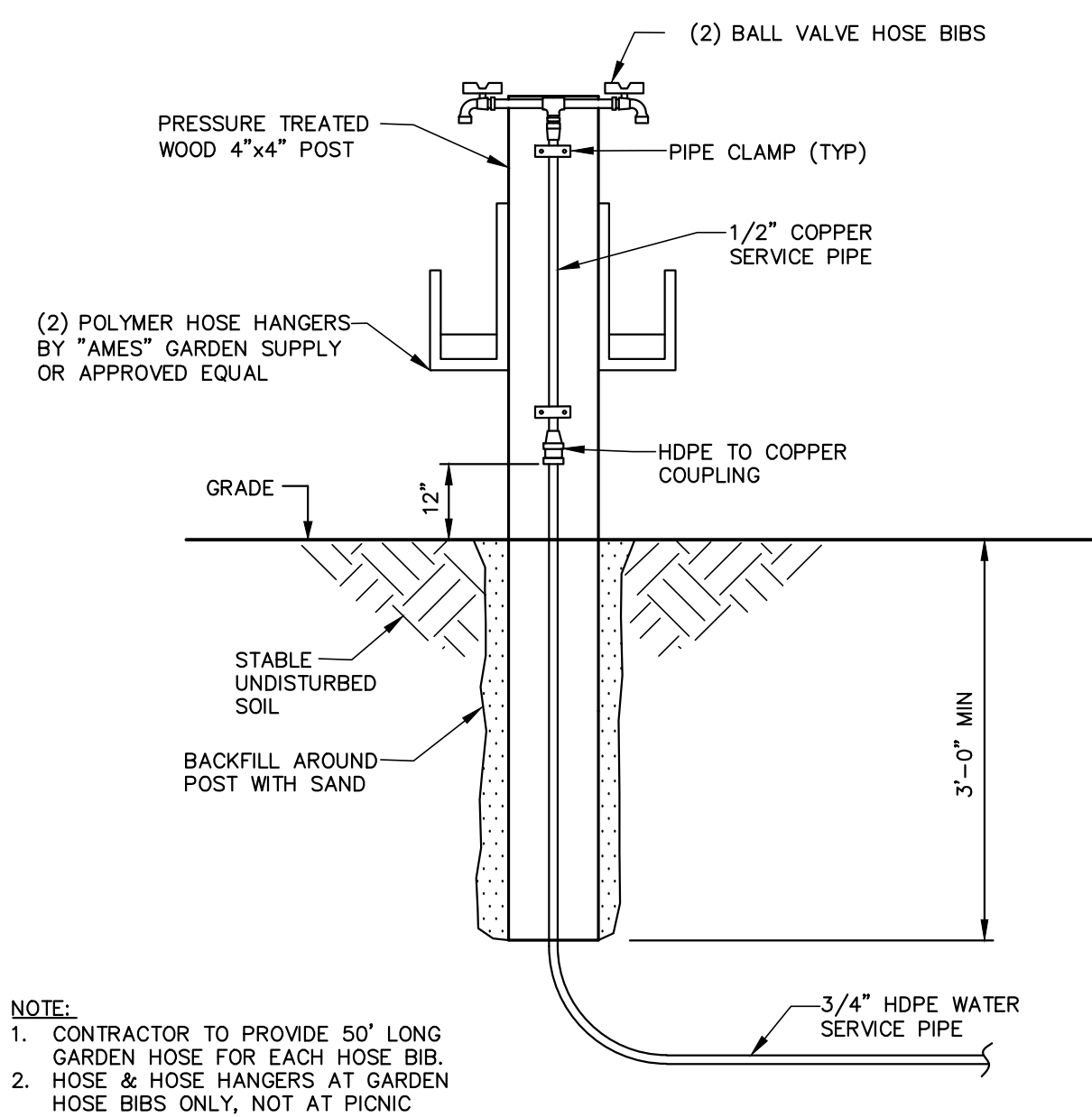


CENTER STRAP ANCHOR
NOT TO SCALE



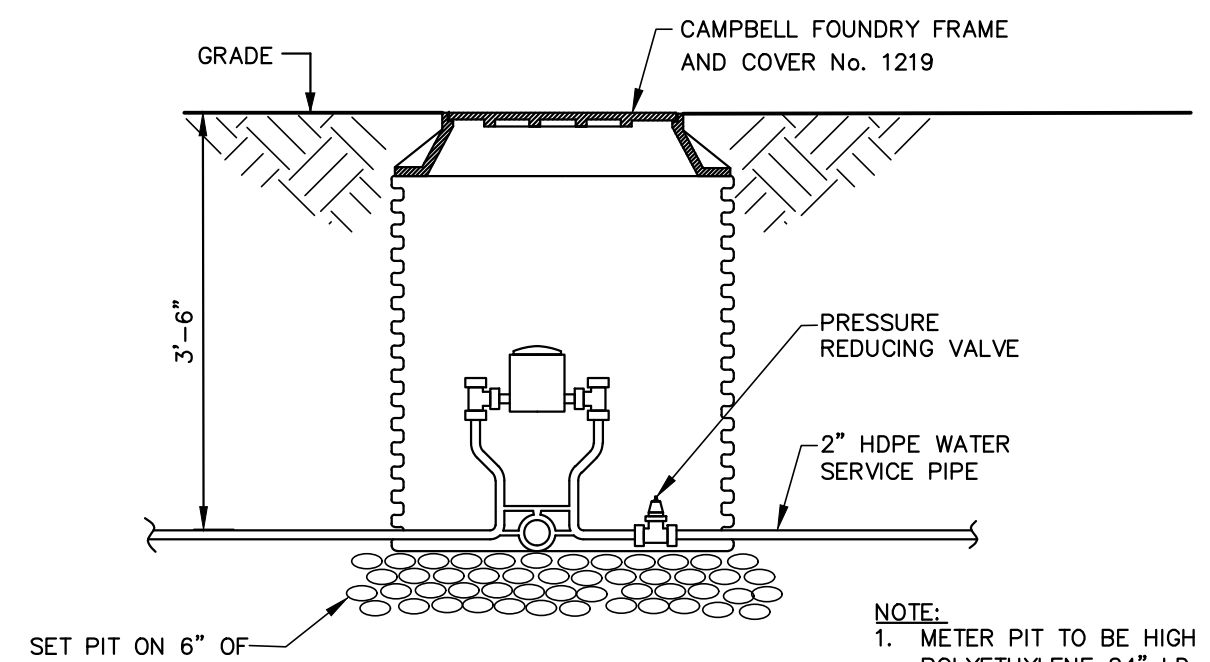
SPLIT RAIL FENCE DETAIL
N.T.S.

NOTES:
1. ALL WOOD SHALL BE NO. 1 GRADE SOUTHERN YELLOW PINE
2. ALL NAILS SHALL BE HOT DIPPED GALVANIZED
3. ALL WOOD TO HAVE "RUSTIC" FINISH
4. EACH END POST SHALL HAVE A 1'-0" SPACER RAIL IN EACH ELLIPTICAL HOLE, WEDGED ADJACENT TO END OF EACH 11'-0" RAIL
5. EACH POST SHALL HAVE A GALVANIZED STAPLE EMBEDDED IN ITS TOP



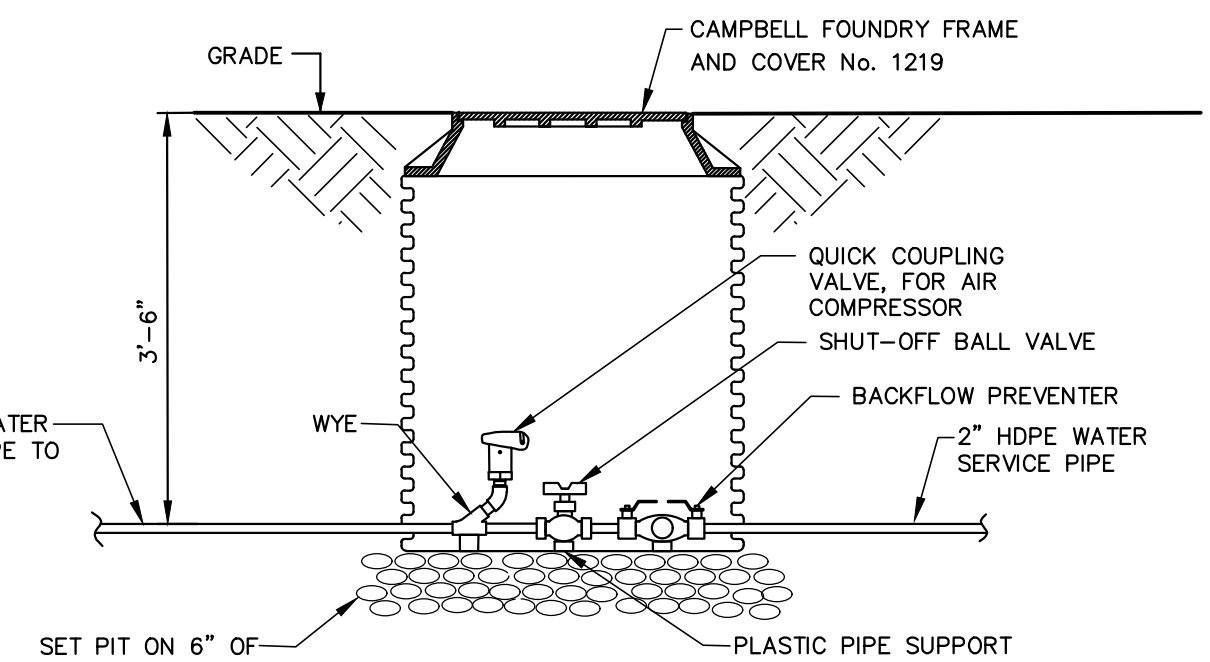
HOSE BIB MOUNTING DETAIL
NOT TO SCALE

NOTE:
1. CONTRACTOR TO PROVIDE 50' LONG GARDEN HOSE FOR EACH HOSE BIB.
2. HOSE & HOSE HANGERS AT GARDEN HOSE BIBS ONLY, NOT AT PICNIC SHELTER.



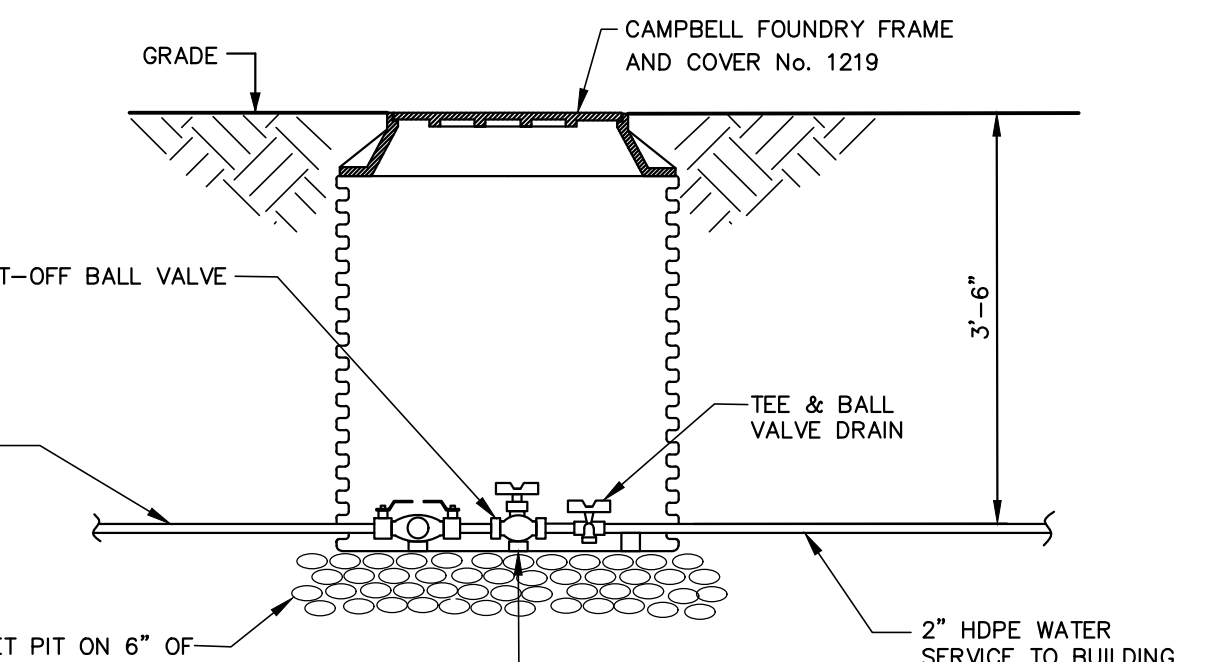
WATER METER PIT DETAIL
NOT TO SCALE

NOTE:
1. METER PIT TO BE HIGH DENSITY POLYETHYLENE 24" I.D. BY ADS OR APPROVED EQUAL
2. WATER METER WILL BE SUPPLIED BY THE TOWNSHIP AND INSTALLED BY THE CONTRACTOR



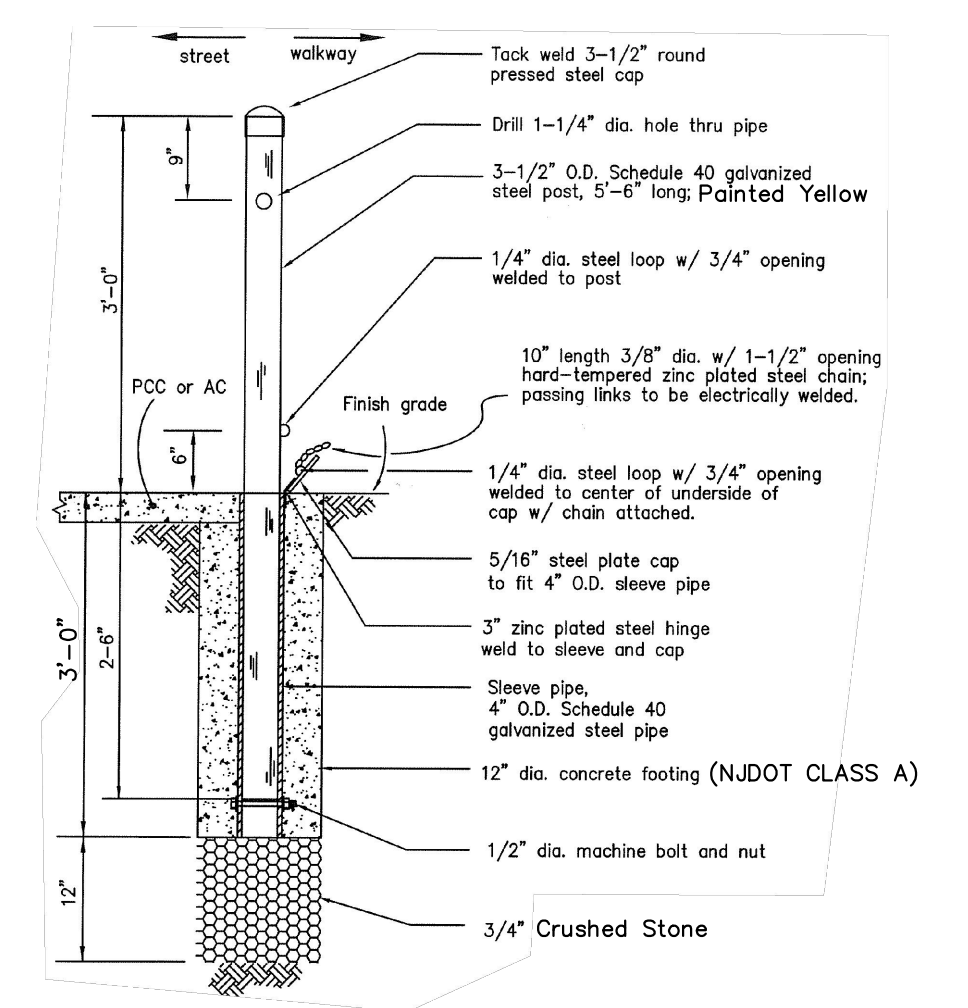
BLOW OFF PIT DETAIL
NOT TO SCALE

NOTE:
1. BLOW OFF PIT TO BE HIGH DENSITY POLYETHYLENE 24" I.D. BY ADS OR APPROVED EQUAL

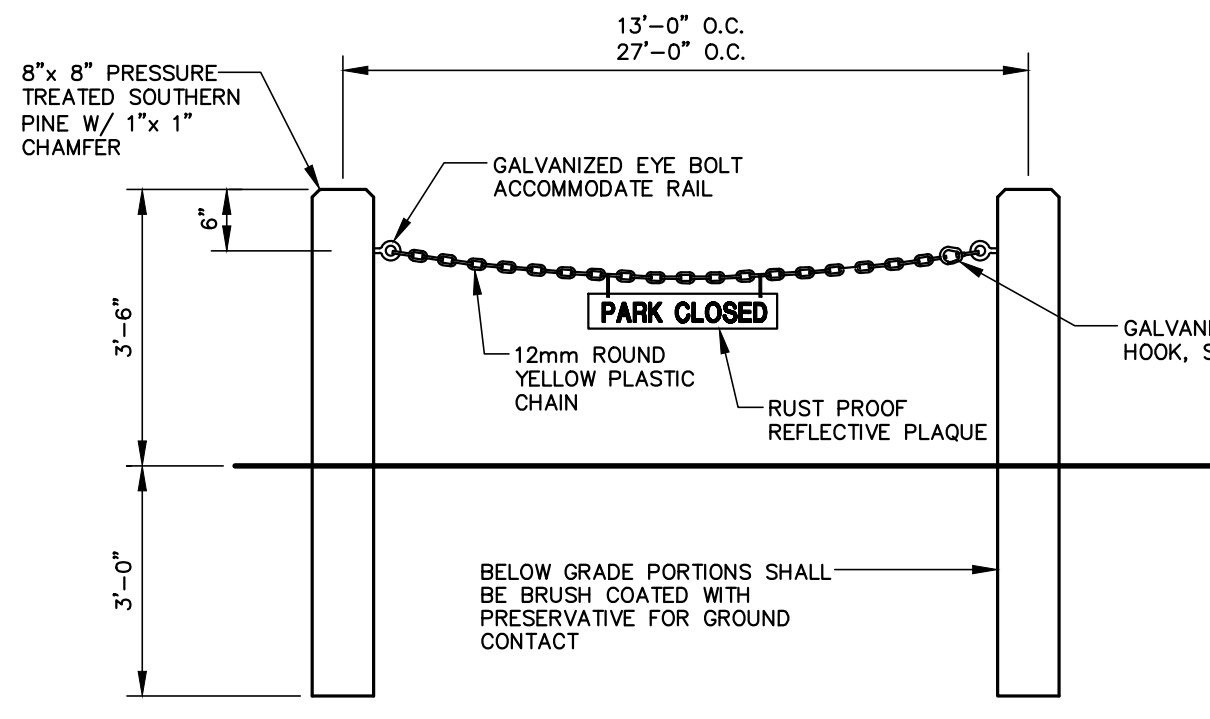


DRAIN PIT DETAIL
NOT TO SCALE

NOTE:
1. DRAIN PIT TO BE HIGH DENSITY POLYETHYLENE 24" I.D. BY ADS OR APPROVED EQUAL

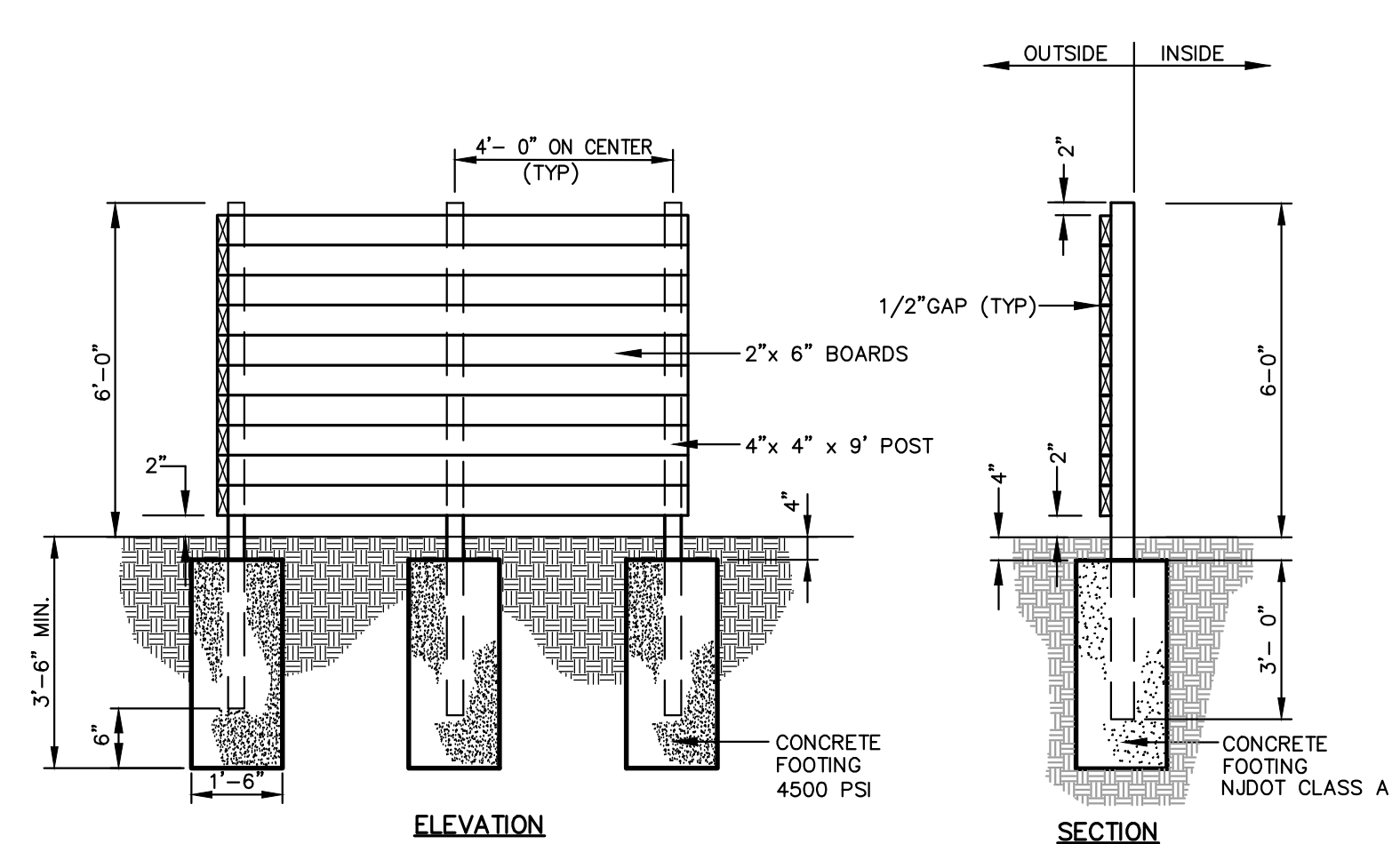


REMOVABLE BOLLARD DETAIL
N.T.S.



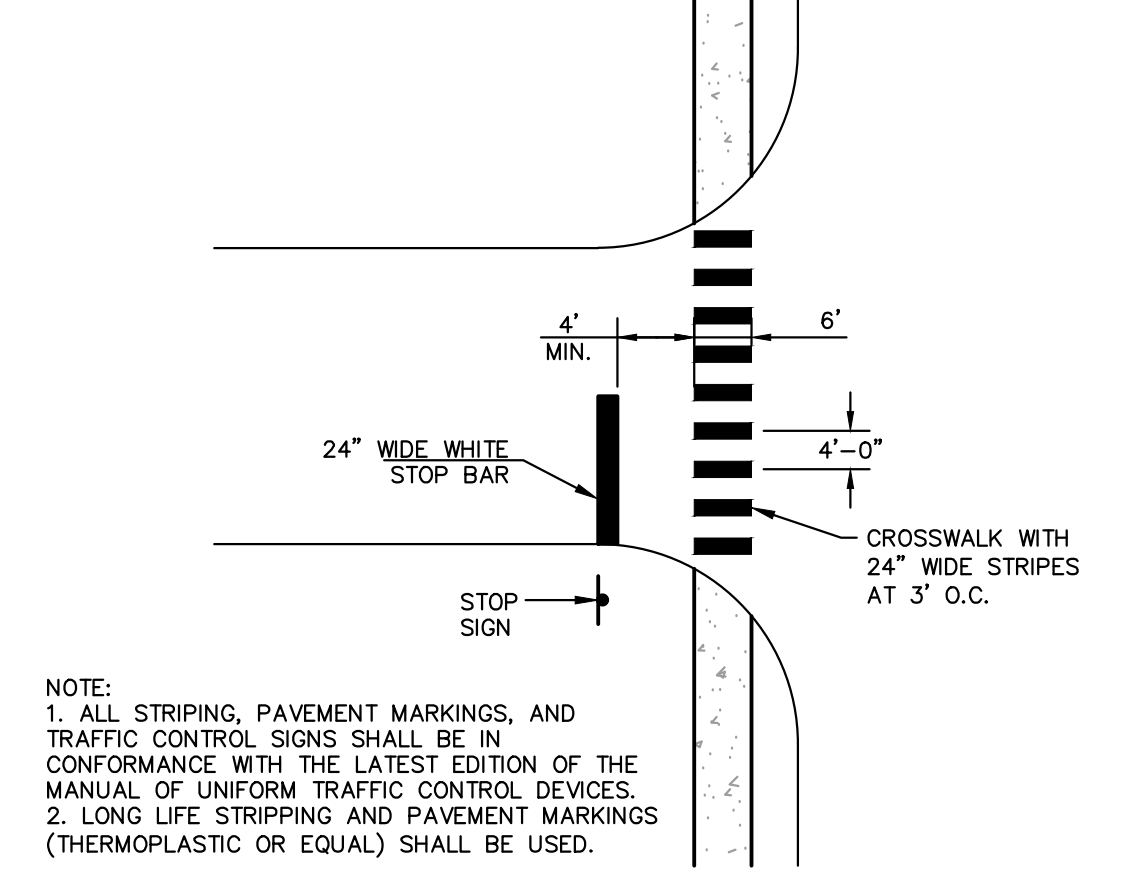
WOOD BOLLARD WITH CHAIN ACCESS GATE
N.T.S.

NOTES:
CHAIN TO BE PROVIDED WITH LOCK AND KEYS AS COORDINATED WITH EMERGENCY RESPONSE OFFICIALS.



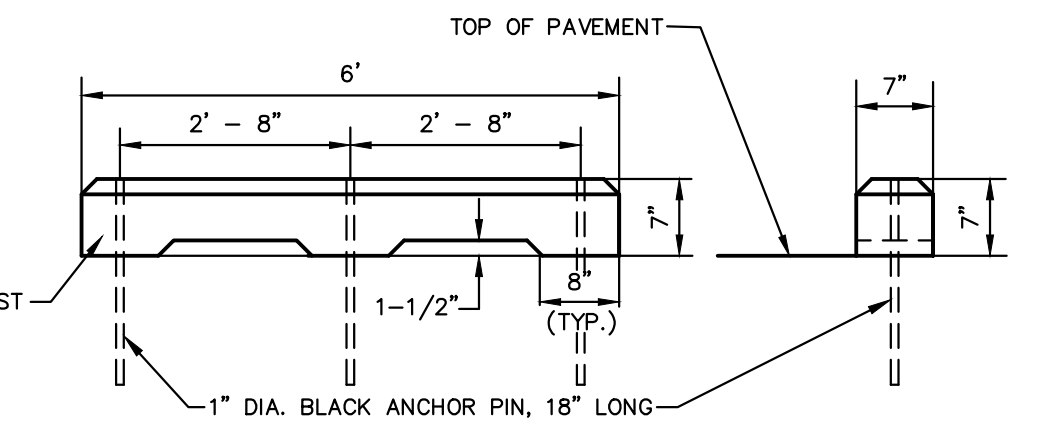
COMPOST BIN BOARD FENCE DETAIL
N.T.S.

NOTES:
1. ALL WOOD SHALL BE NO. 1 GRADE SOUTHERN YELLOW PINE
2. ALL NAILS SHALL BE HOT DIPPED GALVANIZED



STOP BAR DETAIL WITH CROSSWALK
N.T.S.

NOTE:
1. ALL STRIPING, PAVEMENT MARKINGS, AND TRAFFIC CONTROL SIGNS SHALL BE IN CONFORMANCE WITH THE LATEST EDITION OF THE MANUAL OF UNIFORM TRAFFIC CONTROL DEVICES.
2. LONG LIFE STRIPING AND PAVEMENT MARKINGS (THERMOPLASTIC OR EQUAL) SHALL BE USED.



WHEEL STOP DETAIL
N.T.S.

No.	Date	Revision	By	Checked By
4	05/07/18	ISSUED FOR BID	SKW	DFK
3	03/26/18	PER N.D.E.P. COMMENTS	SKW	DFK
2	03/12/18	PER N.D.E.P. COMMENTS	SKW	DFK
1	02/14/18	PER N.D.E.P. COMMENTS	SKW	DFK

FRENCH & PARRELO ASSOCIATES
Hackettstown Office
43A Newburgh Rd, Suite 100
Hackettstown, NJ 07840
908.850.9077
Offices
Corporate - Wall, NJ
New York, NY

DENIS F. KEENAN, P.E.
PROFESSIONAL ENGINEER - N.J. LIC. NO. 46373

CONSTRUCTION DETAILS

FOR
CALAIS ROAD PARK
LOTS 2 & 3 BLOCK 49

TOWNSHIP OF RANDOLPH
MORRIS COUNTY
NEW JERSEY

DATE:	DESIGNED BY:	SCALE:	PROJECT NUMBER:
01/03/2018	RJB	AS NOTED	12259.001
DRAWN BY:	CHECKED BY:	FIELD BOOK:	SHEET:
SKW	DFK		18 of 23

G:\V2K\12200\12259 - Randolph - Calais Recreation Complex\12259-001-CD1.dwg DETAIL 3