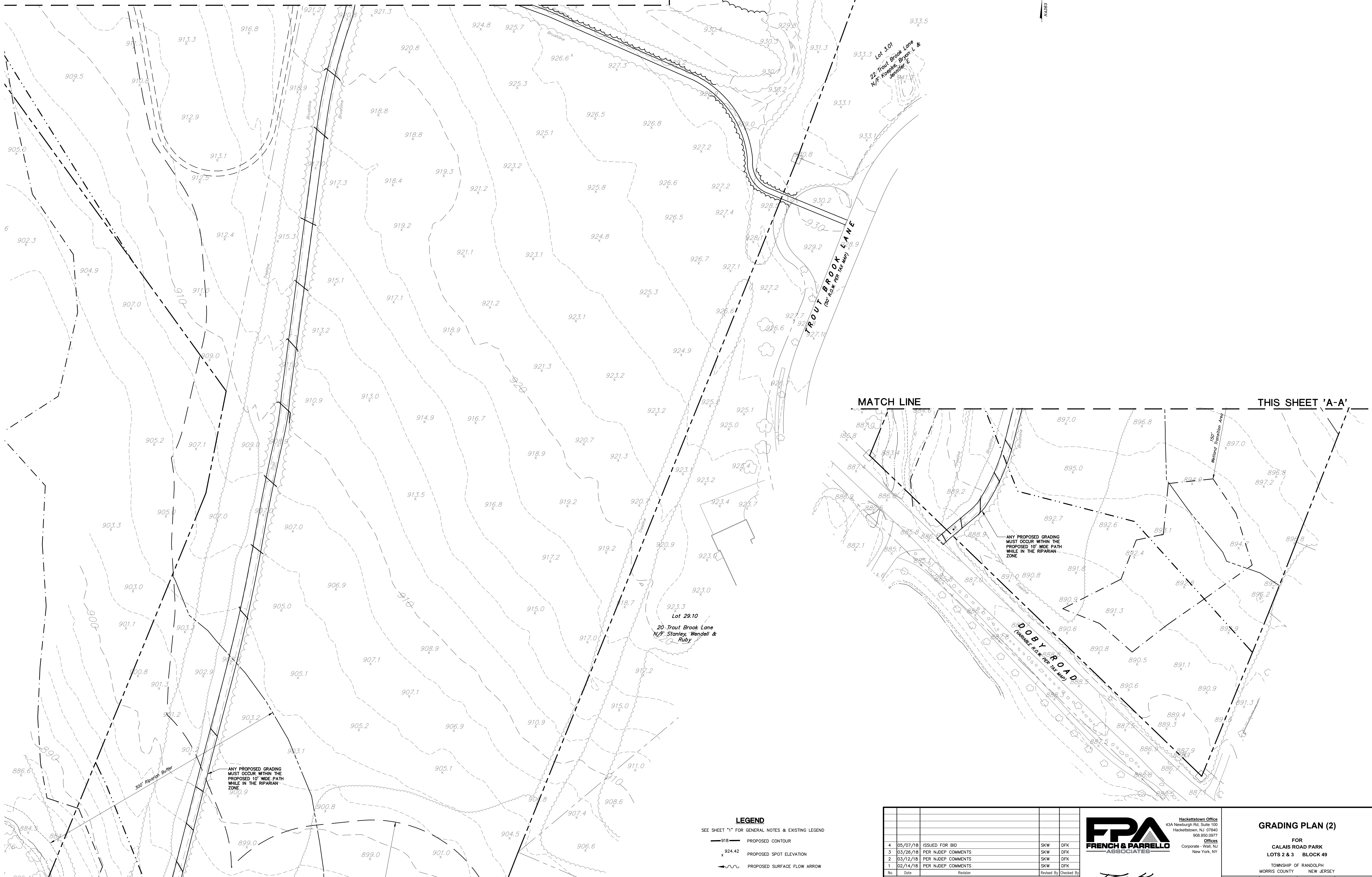


MATCH LINE



MATCH LINE

THIS SHEET 'A-A'

LEGEND

SEE SHEET "1" FOR GENERAL NOTES & EXISTING LEGEND

- 918 — PROPOSED CONTOUR
- x 924.2 PROPOSED SPOT ELEVATION
- PROPOSED SURFACE FLOW ARROW
- PROPOSED LIMIT OF CLEARING & SEEDING

4	05/07/18	ISSUED FOR BID	SKW	DFK
3	03/26/18	PER NJDEP COMMENTS	SKW	DFK
2	03/12/18	PER NJDEP COMMENTS	SKW	DFK
1	02/14/18	PER NJDEP COMMENTS	SKW	DFK
No.	Date	Revision	Revised By	Checked By

40 0 40 80
SCALE IN FEET

FPA
FRENCH & PARRELO
ASSOCIATES

Hackettstown Office
43A Newburgh Rd, Suite 100
Hackettstown, NJ 07840
908.850.9077

Offices
Corporate - Wall, NJ
New York, NY

D.F. Keenan, P.E.
PROFESSIONAL ENGINEER - N.J. LIC. NO. 46373

GRADING PLAN (2)

FOR
CALAIS ROAD PARK
LOTS 2 & 3 BLOCK 49

TOWNSHIP OF RANDOLPH
MORRIS COUNTY NEW JERSEY

DATE:	DESIGNED BY:	SCALE:	PROJECT NUMBER:
01/03/2018	RJB	AS NOTED	12259.001
DRAWN BY:	CHECKED BY:	FIELD BOOK:	SHEET:
SKW	DFK		6 of 23

G:\V2K\12200\12259 - Randolph - Calais Recreation Complex\12259.001 - Rec Complex\CADD\DWG\12259-001-GR-LTI.dwg GRADING 2