

Mount Olive High School Baseball
Flunders, NJ

Lighting System

Fix. ID	Fix. Height	Fix. Spacing	Fixture Size	Luminaire Type	Watt	Count
A1	70'	70'	4	TLC-LED-1200	4.68 kW	A
A2	70'	70'	5	TLC-LED-1200	5.85 kW	A
B1	80'	80'	9	TLC-LED-1500	12.87 kW	A
B2	80'	80'	12	TLC-LED-1500	17.16 kW	A
C1-C2	70'	70'	8	TLC-LED-1200	11.64 kW	A
					6	69.19 kW

Grid	Height	Watt	Fixture Qty
A	Baseball	69.19 kW	56

Fix.	Beam	Beam	Beam	Beam	Beam	Beam
TLC-LED-1500	LED 5700K - 75 CRI	14.50W	146,000	>120,000	>120,000	37
TLC-BT-575	LED 5700K - 75 CRI	575W	52,000	>120,000	>120,000	10
TLC-LED-1200	LED 5700K - 75 CRI	1170W	136,000	>120,000	>120,000	9

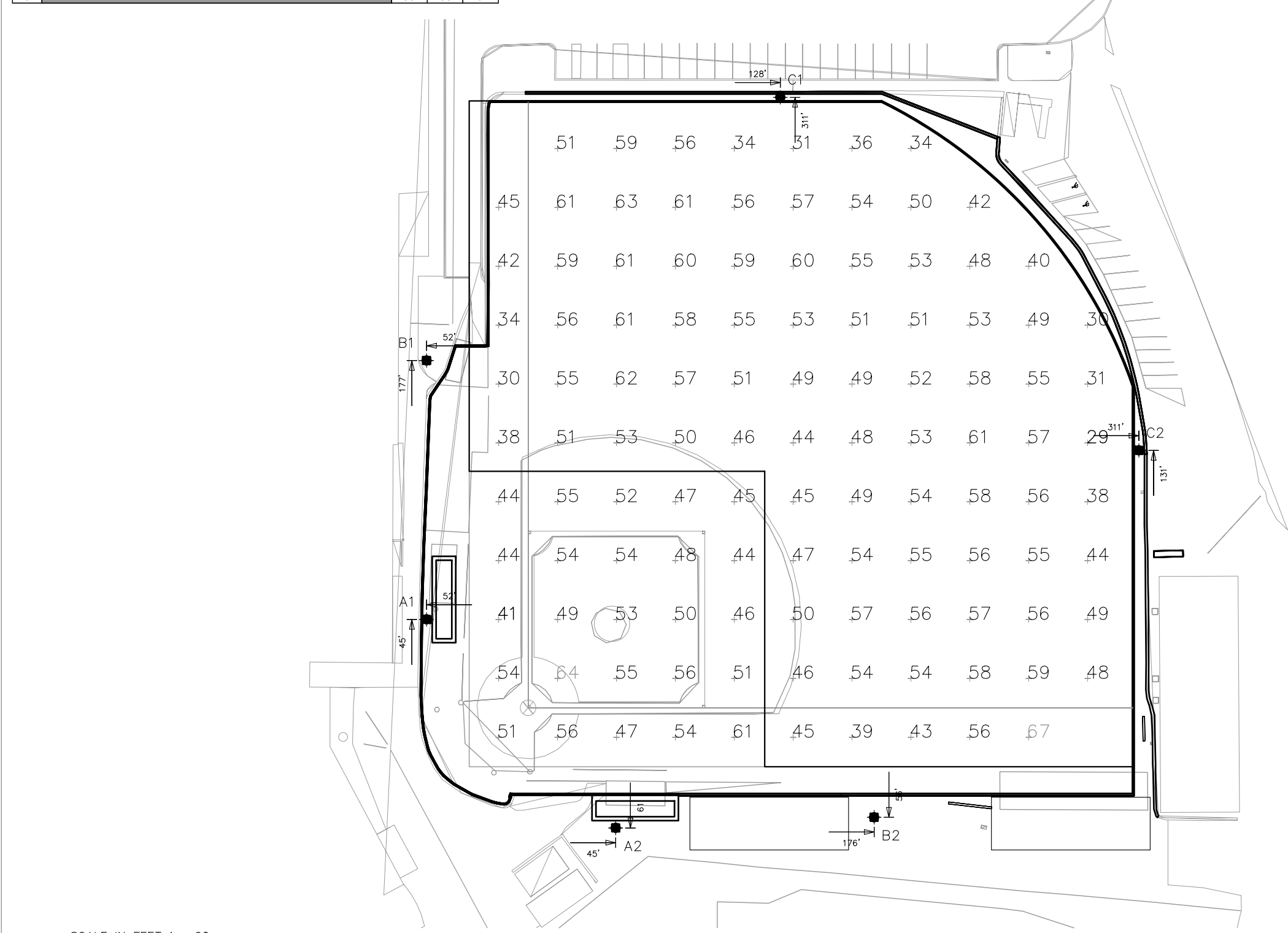
Light Level Summary

Grid Name	Calculation Metric	Min	Avg	Max	Min	Avg	Max	Fix. Qty
150' Spill	Horizontal Illuminance	0.22	0.01	1.68	119.89	22.21	A	56
150' Spill	Max. Candela Metric	10864	960	74471	77.57	11.32	A	56
150' Spill	Max. Vertical Illuminance Metric	0.01	0.04	1.89	90.94	12.64	A	56
Baseball (Infield)	Horizontal Illuminance	51	41	64	1.57	1.24	A	56
Baseball (Outfield)	Horizontal Illuminance	50.7	29	67	2.28	1.75	A	56
Boiling Cage	Horizontal	53.6	33	70	2.13	1.62	A	56
Bulpen	Horizontal	51.1	29	69	2.36	1.76	A	56

ENGINEERED DESIGN By: Matt Sullivan - File #210552A - 23-Feb-21

Not to be reproduced in whole or part without the written consent of Musco Sports Lighting, LLC. ©2021 Musco Sports Lighting, LLC.

Fix. ID	Fix. Height	Fix. Spacing	Fixture Size	Luminaire Type	Watt	Count
A1	70'	70'	4	TLC-BT-575	4.68 kW	A
A2	70'	70'	5	TLC-LED-1200	5.85 kW	A
B1	80'	80'	9	TLC-LED-1500	12.87 kW	A
B2	80'	80'	12	TLC-LED-1500	17.16 kW	A
C1-C2	70'	70'	8	TLC-LED-1200	11.64 kW	A
					6	69.19 kW



SCALE IN FEET 1" = 60'
ENGINEERED DESIGN By: Matt Sullivan - File #210552A - 23-Feb-21

Mount Olive High School Baseball
Flunders, NJ

Grid	Height	Watt	Fixture Qty
A	Baseball	69.19 kW	56

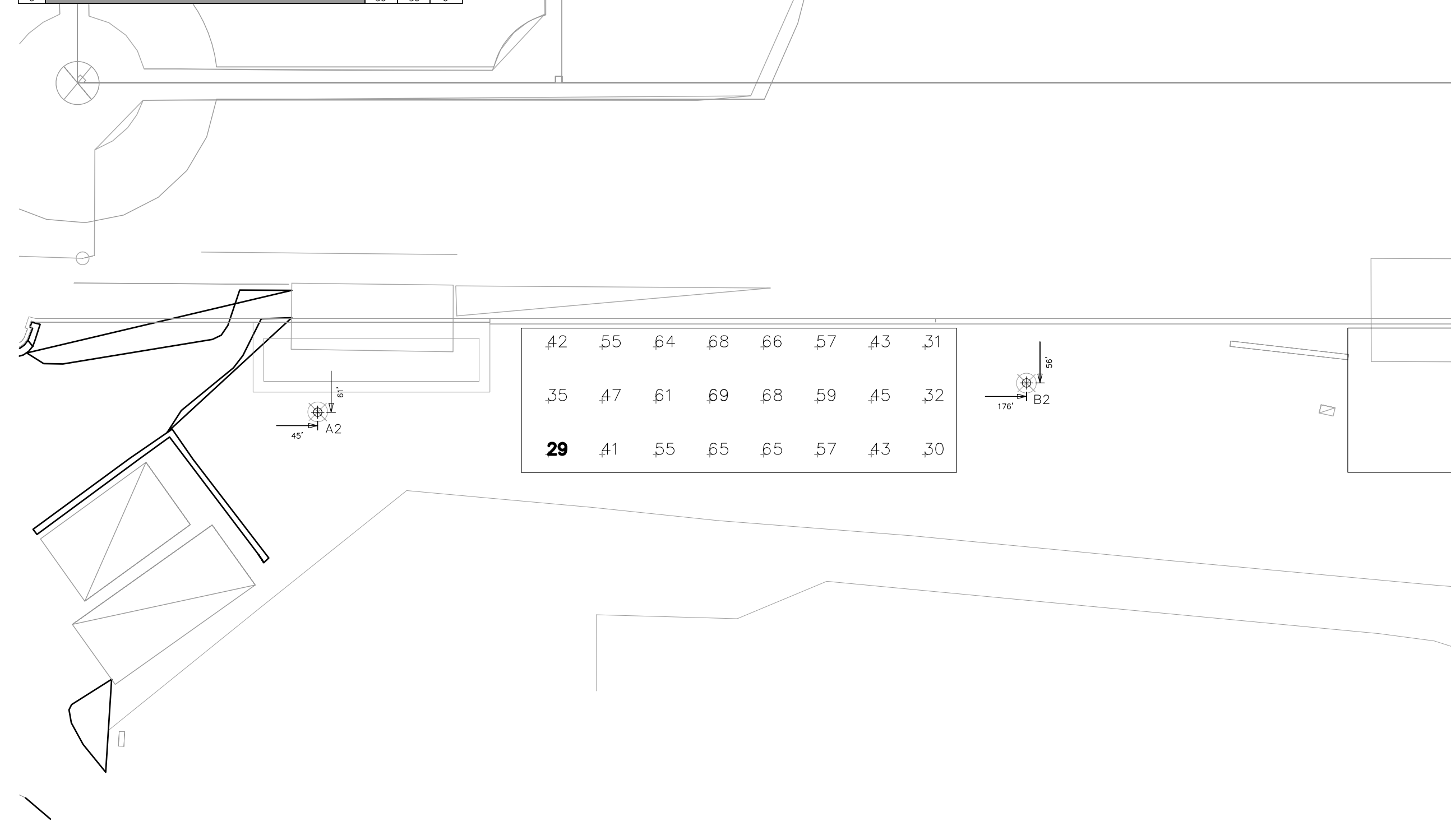
Fix.	Beam	Beam	Beam	Beam	Beam	Beam
TLC-LED-1500	LED 5700K - 75 CRI	14.50W	146,000	>120,000	>120,000	37
TLC-BT-575	LED 5700K - 75 CRI	575W	52,000	>120,000	>120,000	10
TLC-LED-1200	LED 5700K - 75 CRI	1170W	136,000	>120,000	>120,000	9

Grid Name	Calculation Metric	Min	Avg	Max	Min	Avg	Max	Fix. Qty
150' Spill	Horizontal Illuminance	0.22	0.01	1.68	119.89	22.21	A	56
150' Spill	Max. Candela Metric	10864	960	74471	77.57	11.32	A	56
150' Spill	Max. Vertical Illuminance Metric	0.01	0.04	1.89	90.94	12.64	A	56
Baseball (Infield)	Horizontal Illuminance	51	41	64	1.57	1.24	A	56
Baseball (Outfield)	Horizontal Illuminance	50.7	29	67	2.28	1.75	A	56
Boiling Cage	Horizontal	53.6	33	70	2.13	1.62	A	56
Bulpen	Horizontal	51.1	29	69	2.36	1.76	A	56

ENGINEERED DESIGN By: Matt Sullivan - File #210552A - 23-Feb-21

Not to be reproduced in whole or part without the written consent of Musco Sports Lighting, LLC. ©2021 Musco Sports Lighting, LLC.

Fix. ID	Fix. Height	Fix. Spacing	Fixture Size	Luminaire Type	Watt	Count
A1	70'	70'	4	TLC-LED-1200	4.68 kW	A
A2	70'	70'	5	TLC-LED-1200	5.85 kW	A
B1	80'	80'	9	TLC-LED-1500	12.87 kW	A
B2	80'	80'	12	TLC-LED-1500	17.16 kW	A
C1-C2	70'	70'	8	TLC-LED-1200	11.64 kW	A
					6	69.19 kW



SCALE IN FEET 1" = 20'
ENGINEERED DESIGN By: Matt Sullivan - File #210552A - 23-Feb-21

Mount Olive High School Baseball
Flunders, NJ

Grid	Height	Watt	Fixture Qty
A	Baseball	69.19 kW	56

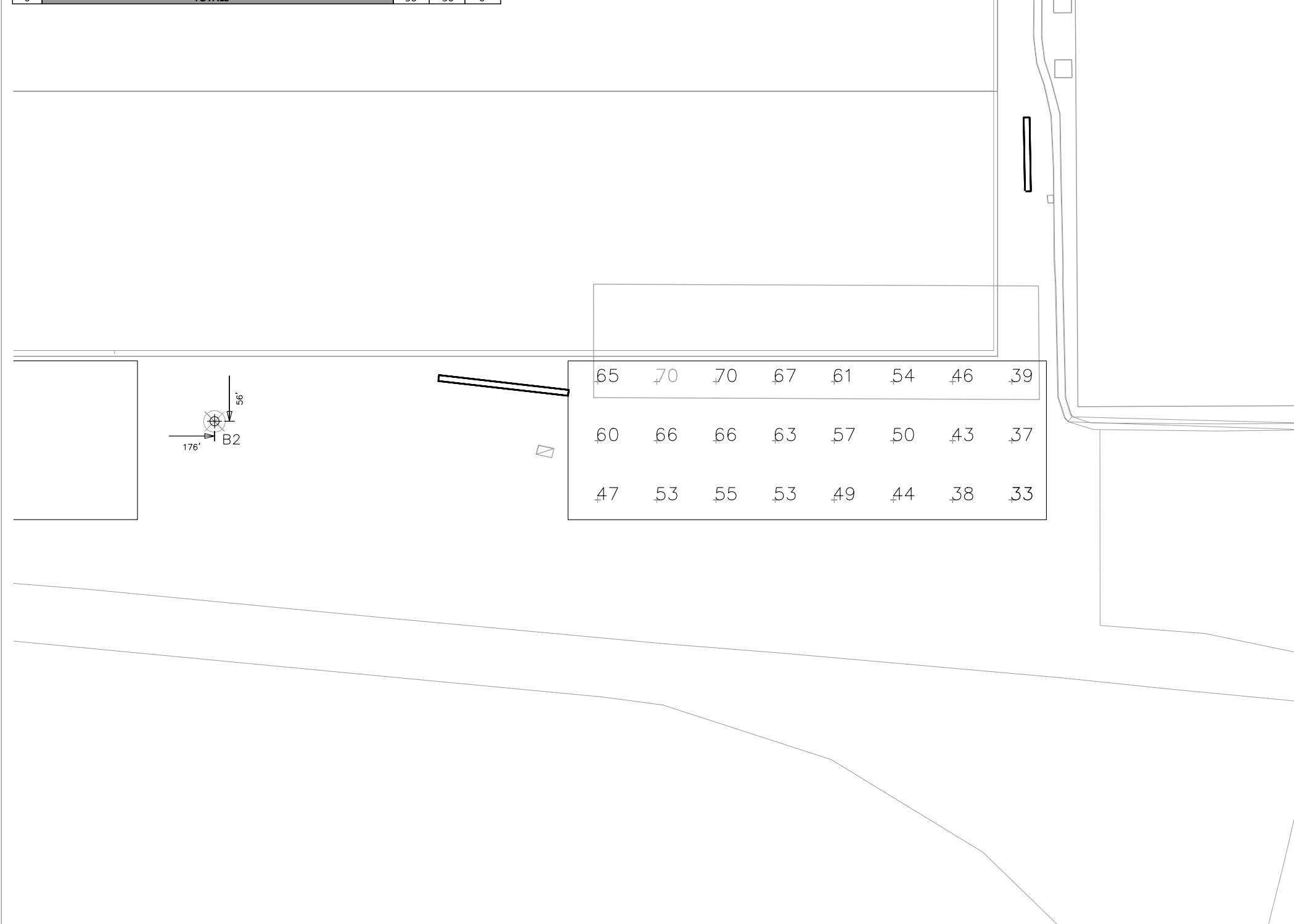
Fix.	Beam	Beam	Beam	Beam	Beam	Beam
TLC-LED-1500	LED 5700K - 75 CRI	14.50W	146,000	>120,000	>120,000	37
TLC-BT-575	LED 5700K - 75 CRI	575W	52,000	>120,000	>120,000	10
TLC-LED-1200	LED 5700K - 75 CRI	1170W	136,000	>120,000	>120,000	9

Grid Name	Calculation Metric	Min	Avg	Max	Min	Avg	Max	Fix. Qty
150' Spill	Horizontal Illuminance	0.22	0.01	1.68	119.89	22.21	A	56
150' Spill	Max. Candela Metric	10864	960	74471	77.57	11.32	A	56
150' Spill	Max. Vertical Illuminance Metric	0.01	0.04	1.89	90.94	12.64	A	56
Baseball (Infield)	Horizontal Illuminance	51	41	64	1.57	1.24	A	56
Baseball (Outfield)	Horizontal Illuminance	50.7	29	67	2.28	1.75	A	56
Boiling Cage	Horizontal	53.6	33	70	2.13	1.62	A	56
Bulpen	Horizontal	51.1	29	69	2.36	1.76	A	56

ENGINEERED DESIGN By: Matt Sullivan - File #210552A - 23-Feb-21

Not to be reproduced in whole or part without the written consent of Musco Sports Lighting, LLC. ©2021 Musco Sports Lighting, LLC.

Fix. ID	Fix. Height	Fix. Spacing	Fixture Size	Luminaire Type	Watt	Count
A1	70'	70'	4	TLC-LED-1200	4.68 kW	A
A2	70'	70'	5	TLC-LED-1200	5.85 kW	A
B1	80'	80'	9	TLC-LED-1500	12.87 kW	A
B2	80'	80'	12	TLC-LED-1500	17.16 kW	A
C1-C2	70'	70'	8	TLC-LED-1200	11.64 kW	A
					6	69.19 kW



SCALE IN FEET 1" = 20'
ENGINEERED DESIGN By: Matt Sullivan - File #210552A - 23-Feb-21

Mount Olive High School Baseball
Flunders, NJ

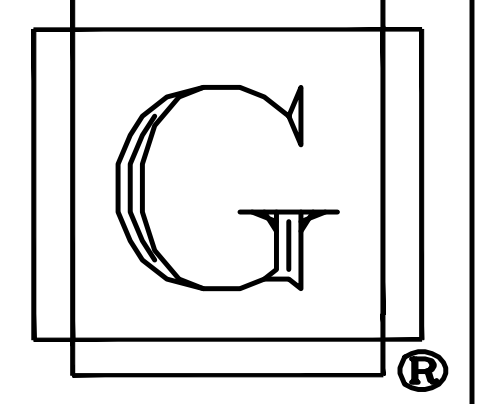
Grid	Height	Watt	Fixture Qty
A	Baseball	69.19 kW	56

Fix.	Beam	Beam	Beam	Beam	Beam	Beam
TLC-LED-1500	LED 5700K - 75 CRI	14.50W	146,000	>120,000	>120,000	37
TLC-BT-575	LED 5700K - 75 CRI	575W	52,000	>120,000	>120,000	10
TLC-LED-1200	LED 5700K - 75 CRI	1170W	136,000	>120,000	>120,000	9

Grid Name	Calculation Metric	Min	Avg	Max	Min	Avg	Max	Fix. Qty
150' Spill	Horizontal Illuminance	0.22	0.01	1.68	119.89	22.21	A	56
150' Spill	Max. Candela Metric	10864	960	74471	77.57	11.32	A	56
150' Spill	Max. Vertical Illuminance Metric	0.01	0.04	1.89	90.94	12.64	A	56
Baseball (Infield)	Horizontal Illuminance	51	41	64	1.57	1.24	A	56
Baseball (Outfield)	Horizontal Illuminance	50.7	29	67	2.28	1.75	A	56
Boiling Cage	Horizontal	53.6	33	70	2.13	1.62	A	56
Bulpen	Horizontal	51.1	29	69	2.36	1.76	A	56

ENGINEERED DESIGN By: Matt Sullivan - File #210552A - 23-Feb-21

Not to be reproduced in whole or part without the written consent of Musco Sports Lighting, LLC. ©2021 Musco Sports Lighting, LLC.



GIANFORCARO ARCHITECTS & PLANNERS

555 EAST MAIN ST.
CHESTER, N.J. 07930
PHONE: (908) 879-6001
FAX: (908) 879-8505

- ARCHITECTURAL
- CIVIL
- STRUCTURAL
- CONSTRUCTION
- ENVIRONMENTAL
- MECHANICAL
- FORENSIC

ANTHONY GIANFORCARO, AIA, PE
REGISTERED ARCHITECT
N.J. LIC. NO. 13996
PROFESSIONAL ENGINEER
N.J. LIC. NO. 39006
PA. LIC. NO. 43077

GEORGE F. GIANFORCARO, PE, PP
PROFESSIONAL ENGINEER
N.J. LIC. NO. 15298
PA. LIC. NO. 17377
N.Y. LIC. NO. 52202
PROFESSIONAL PLANNER
N.J. LIC. NO. 3501

SYNTHETIC TURF FIELD AND FIELD LIGHTING

AT THE MT. OLIVE HIGH SCHOOL

FOR THE MT. OLIVE BOARD OF EDUCATION

MORRIS COUNTY
NEW JERSEY

FIELD LIGHTING DETAILS

SCALE: AS NOTED

DATE	DRAWN
8/12/21	MGG
	CHECKED
	AG

FILE: MOHSBaseballTurfR8
REVISION: SP-4.2