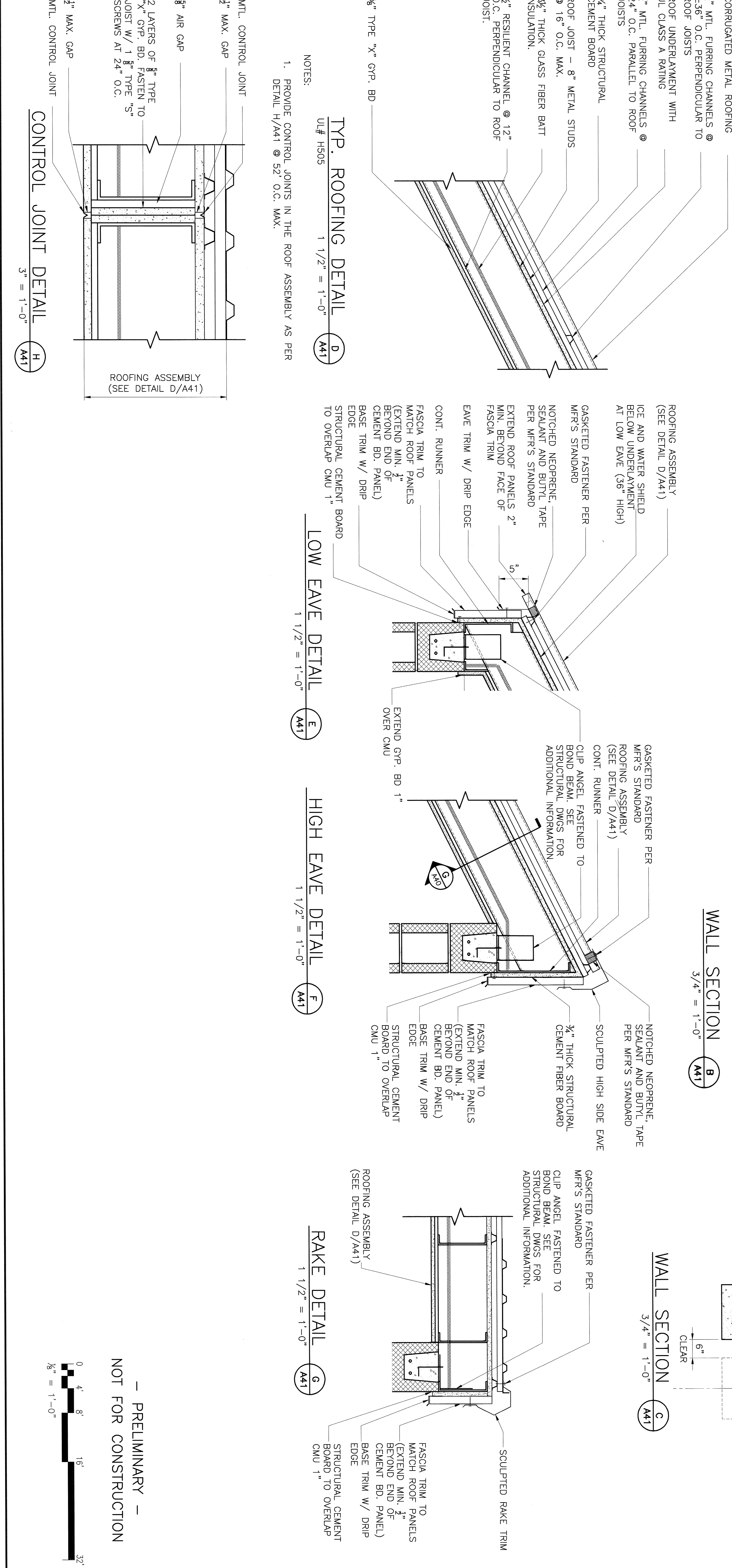
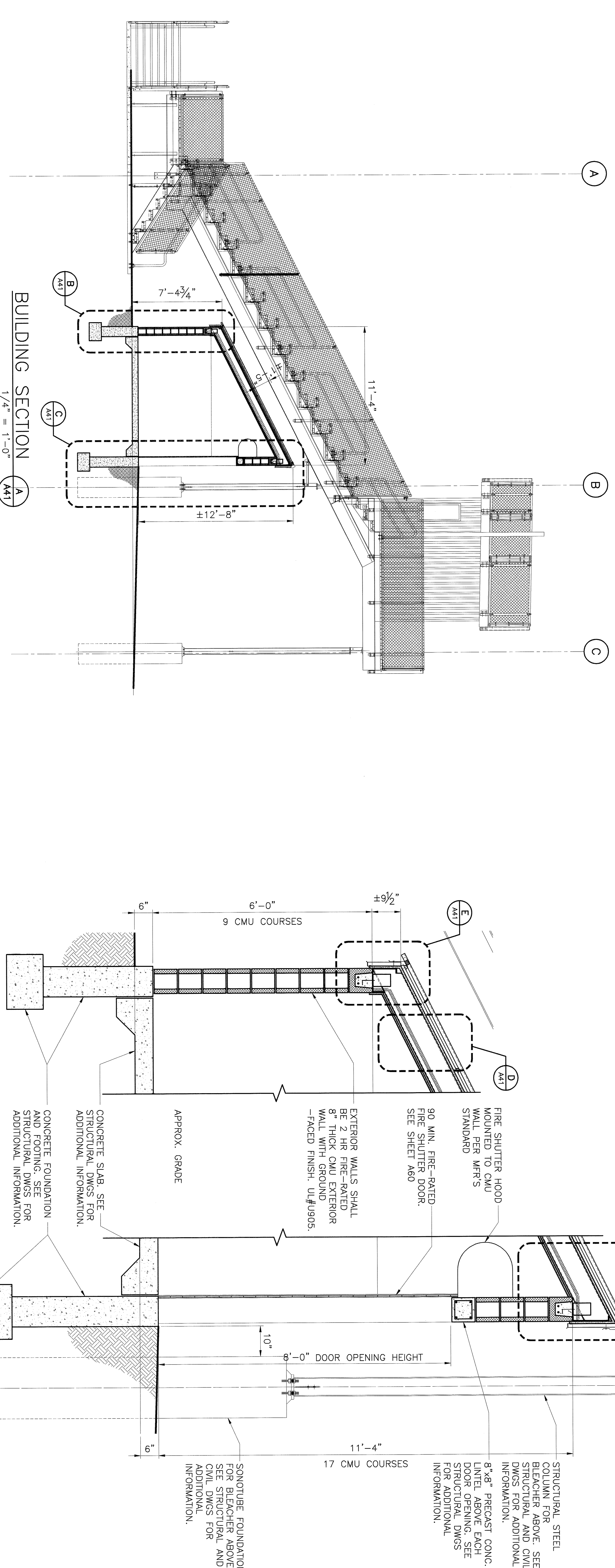


GENERAL NOTES:

1. SEE SHEET T02 FOR ADDITIONAL GENERAL NOTES, ABBREVIATIONS, SYMBOLS AND LEGENDS.
2. SEE GENERAL NOTES #19, 20 AND 21 ON T02 FOR MANDATORY SUBCONTRACTOR REQUIREMENTS.
3. SEE GENERAL NOTE #16 ON SHEET T02 FOR DIMENSION INFORMATION.
4. SEE SHEET A65 FOR WINDOW AND LOUVER SCHEDULES.



<p>NOT FOR CONSTRUCTION</p> <p>0 4 8 16 32 3/8" = 1'-0"</p>											
<p>— PRELIMINARY —</p>											
<p>REVISIONS</p> <table border="1"> <thead> <tr> <th>REV</th> <th>ISSUED FOR BID AND CONSTRUCTION</th> <th>REVISION DESCRIPTION</th> <th>R/S</th> <th>DATE</th> </tr> </thead> <tbody> <tr> <td>0</td> <td>ISSUED FOR BID AND CONSTRUCTION</td> <td></td> <td>R/S</td> <td>4 NOV 19</td> </tr> </tbody> </table>		REV	ISSUED FOR BID AND CONSTRUCTION	REVISION DESCRIPTION	R/S	DATE	0	ISSUED FOR BID AND CONSTRUCTION		R/S	4 NOV 19
REV	ISSUED FOR BID AND CONSTRUCTION	REVISION DESCRIPTION	R/S	DATE							
0	ISSUED FOR BID AND CONSTRUCTION		R/S	4 NOV 19							
<p>PROJECT INFORMATION</p> <p>PROJECT: PISCATAWAY HIGH SCHOOL BLEACHERS, FIELD LIGHTING & STORAGE FACILITY REPLACEMENT NEW JERSEY</p> <p>CLIENT: PISCATAWAY</p>											
<p>DESIGNER</p> <p>RI Associates ARCHITECTS & ENGINEERS, PA 8 RIDGEWALK AVE. SUITE 200 PISCATAWAY, NJ 07053-3777</p>											
<p>ARCHITECT</p> <p>RICHARD F. BASTA, AIA REGISTERED ARCHITECT LICENSE NO. NJ 10149</p>											
<p>SCALE</p> <p>AS NOTED</p>											
<p>PROJECT NO. EA DRAWING NO. A41</p>											
<p>PROJECT NAME STORAGE BUILDING SECTIONS</p>											