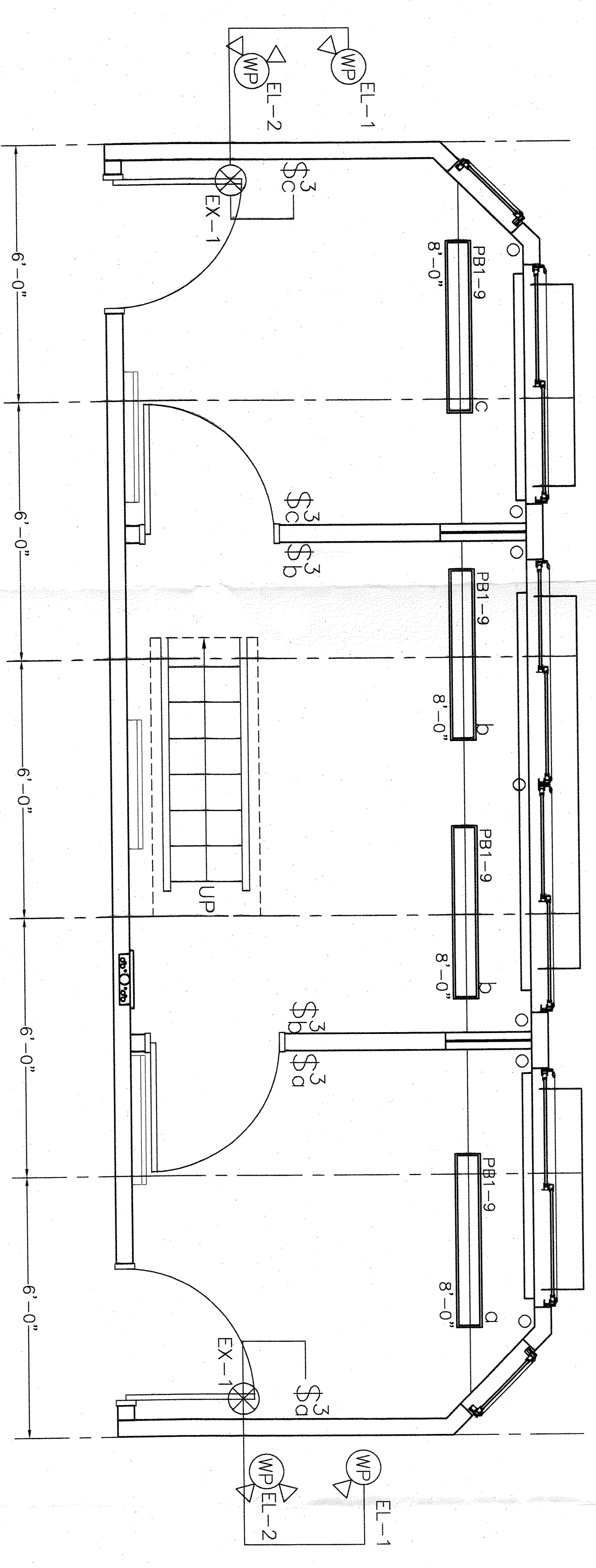


PRESSBOX ELECTRICAL PLAN 1
1/2" = 1'-0" (E12)



PRESSBOX LIGHTING PLAN 2
1/2" = 1'-0" (E12)

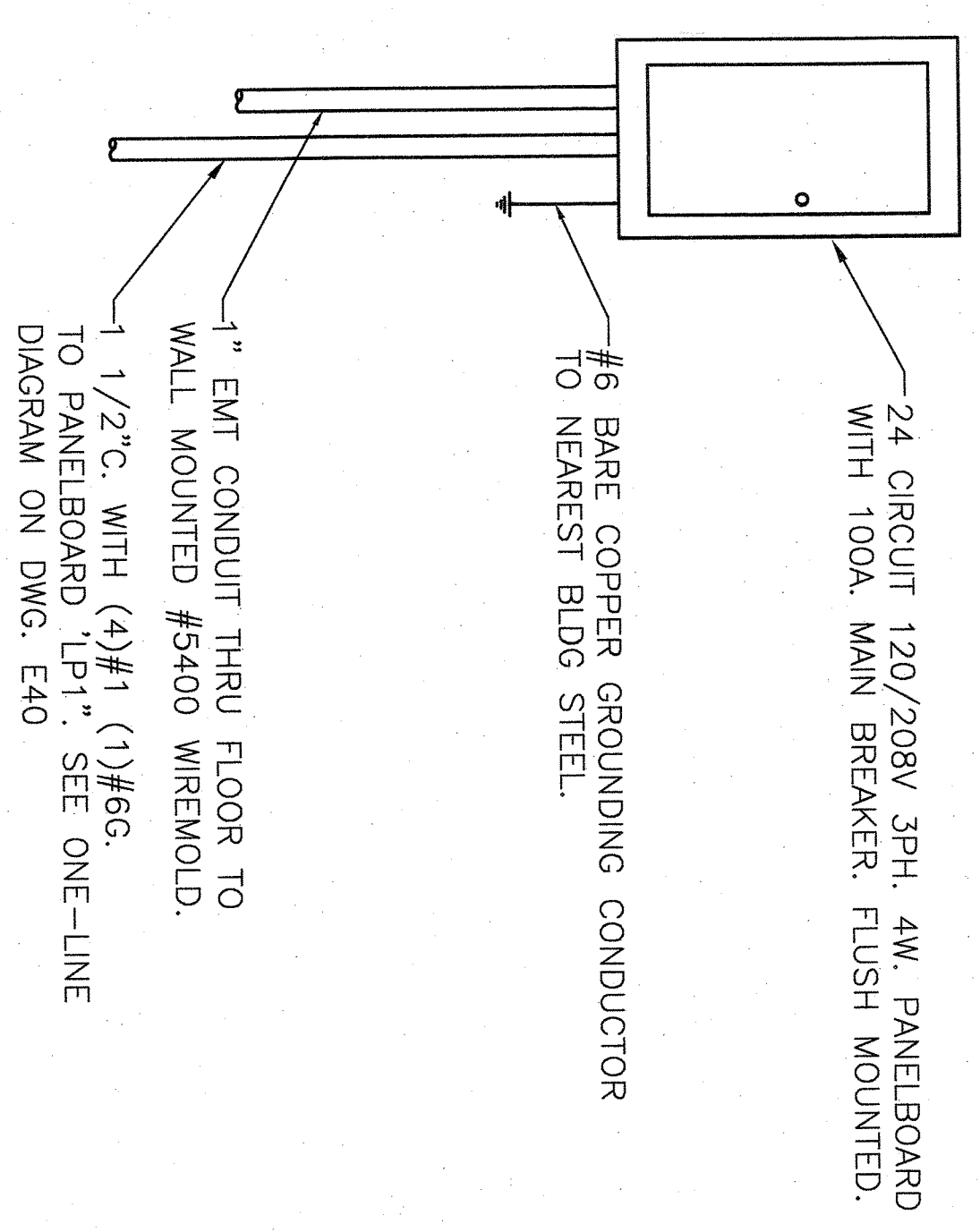
DESCRIPTION: 120/208V 3PH, 4W, 100 AMP MAIN BREAKER
FEEDER SIZE: #1 COPPER W/ #6 GND.

FED FROM:	DESCRIPTION	BKR	P	WIRE	WATTS	WIRE	P	BKR	DESCRIPTION	CKT	
1	BASEBOARD HEATER	20	2	12	750	12	2	20	BASEBOARD HEATER	2	
3	BASEBOARD HEATER	20	2	12	750	12	1	20	BASEBOARD HEATER	4	
5	BASEBOARD HEATER	20	2	12	750	12	1	20	ROOFTOP RECEPTACLE (GFCI)	6	
7	BASEBOARD HEATER	20	2	12	750	12	1	20	PRESS BOX WIRE-MOLD	8	
9	PRESS BOX LIGHTING	20	1	12	1130	12	1	20	PRESS BOX WIRE-MOLD	10	
11	PRESS BOX GENERAL RECEPT.	20	1	12	720	12	1	20	PRESS BOX WIRE-MOLD	12	
13	PRESS BOX WIRE-MOLD	20	1	12	360	12	1	20	SPARE	14	
15	SPARE	20	1	12		12	1	20	SPARE	16	
17	SPARE	20	1	12		12	1	20	SPARE	18	
19	SPARE	20	1	12		12	1	20	SPARE	20	
21	SPARE	20	1	12		12	1	20	SPARE	22	
23	SPARE	20	1	12		12	1	20	SPARE	24	
TOTAL WATTS: 7280					TOTAL WATTS: 3710					TOTAL WATTS: 3570	

NOTES:

- 1) THE UTILITY METER BASE & FEEDER SYSTEM TO BE PROVIDED BY OTHERS ON SITE, UNDER THE AUTHORITY OF ALL LOCAL JURISDICTIONS.
- 2) CONNECTION OF ELECTRICAL SERVICE TO BE PERFORMED BY A LICENSED ELECTRICIAN. (BY OTHERS)
- 3) ALL NUMBERS ON ELECTRICAL CIRCUITS DESIGNATE FEED SIDE OF CIRCUIT.
- 4) ALL BRANCH CIRCUIT WIRING TO BE ROUTED IN THIN WALL EMT CONDUIT-MIN 12 THHN WIRE OR MC CABLE.

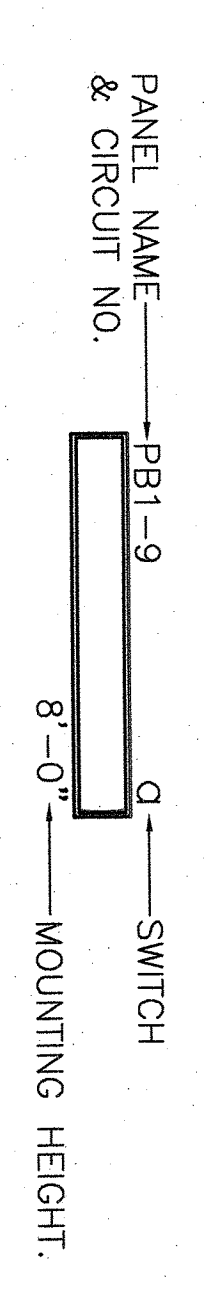
PANELBOARD PB-1 SCHEDULE (E12)



PANELBOARD PB-1 ELEVATION 4
NTS (E12)

- NOTES:
1. REFER TO DRAWING NUMBER ES01 FOR ELECTRICAL SITE PLAN.
 2. REFER TO DRAWING NUMBER E11 FOR LIGHTING AND ELECTRICAL PLAN STORAGE BUILDING.

LIGHT FIXTURE DESIGNATIONS:



SYMBOL	DESCRIPTION
	1' X 4' SURFACE MOUNT LINEAR DIRECT LED LIGHT FIXTURE WITH WHITE FROSTED LENS. 120/277V. FIXTURE COLOR: WHITE. H.E. WILLIAMS CAT.#39-4-LS2-840-A-X-DIM-UNV. (OR APPROVED EQUAL)
	120/208V 3PH, 4W, 24 CIRCUIT PANELBOARD, FLUSH MOUNTED WITH 100AMP MAIN BREAKER, SQUARE-D (OR APPROVED EQUAL)
	PASS & SEMOUR #TM873 SPEC. GRADE, GROUNDING TYPE, 3-WAY SWITCH AND COVERPLATE. (OR APPROVED EQUAL)
	MORRIS SQUARE HEAD LED COMBO EXIT/EMERGENCY LIGHT, PRODUCT #73442 (OR APPROVED EQUAL)
	PASS & SEMOUR 20A, 120V, CR20 SPEC. GRADE, GROUNDING TYPE, RECEPTACLE WITH COVERPLATE, GFI WHERE NOTED. MTD. 18" AFF. UNLESS NOTED OTHERWISE. (OR APPROVED EQUAL)
	WIRED MOLD #5400 SERIES NON-METALLIC RACEWAY W/ 20A 120V, DUPLEX RECEPT'S AND VOICE/DATA JACKS 48" O.C. WITH CENTER BARRIER. COLOR: IVORY. MOUNT W/REMOULD BELOW DESK TOP.
	180-DEGREE WHITE OUTDOOR LED MOTION SECURITY LIGHT W/ DUSK TO DAWN SENSOR #DFI-5982-WH WALL MOUNTED ABOVE THE CENTER OF THE DOOR.
	LITHONIA #ELA-W-NX-N0806 WITH (1) SINGLE REMOTE EMERGENCY LIGHT HEAD. (OR APPROVED EQUAL)
	BERKO #BKOC2543W 3'-0" ELECTRIC BASEBOARD HEATER WITH THERMOSTAT.
	JUNCTION BOX FOR ROUTING ROOF MOUNTED 20A, 120V, GFI PROTECTED RECEPTACLES IN WEATHERPROOF ENCLOSURES. RECEPTACLE QUAN. AND LOCATIONS TO BE DECIDED BY OWNER OR HIS REPRESENTATIVE. CONNECT NO MORE THAN 1920VA PER 1-POLE 20A CIRCUIT BREAKER.
	HOME RUN TO PANEL, CIRCUIT NUMBER INDICATED AT END OF ARROW. REFER TO PANEL SCHEDULE FOR WIRE SIZE, NUMBER OF ARROWS DENOTES TYPE OF CIRCUIT BREAKER (3-POLE, 2-POLE, 1-POLE).

SYMBOL LIST (E12)

NUDGE STATE PROJECT NO.: 4130-050-19-4000

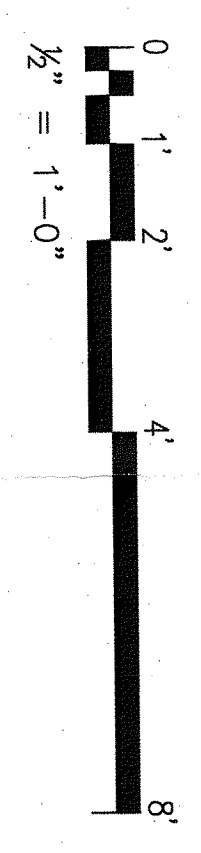
REV	ISSUED FOR ADDENDUM #1	REVISION DESCRIPTION	RPS	DATE
1			19 NOV 2019	

EI Associates
ARCHITECTS & ENGINEERS, PA
6 FEDERAL AVENUE, SUITE 100, NEW JERSEY 07102-3177

ROBERT E. MARSHALL, P.E. PROFESSIONAL ENGINEER
LICENSE NO. NJ 38891

PROJECT: PISCATAWAY HIGH SCHOOL
BLEACHERS, FIELD LIGHTING & STORAGE FACILITY REPLACEMENT
NEW JERSEY

PROJECT NO. E12
DRAWING NO. E12
DATE: 19 NOV 2019



SCALE: AS NOTED	PROJECT: PISCATAWAY HIGH SCHOOL	EA DRAWING NO. E12
DESIGNED BY: [Signature]	BLEACHERS, FIELD LIGHTING & STORAGE FACILITY REPLACEMENT	EA PROJECT NO. ESR8531.01
CHECKED BY: [Signature]	NEW JERSEY	
DATE: [Signature]		
TITLE: LIGHTING AND ELECTRICAL PLAN PRESSBOX		