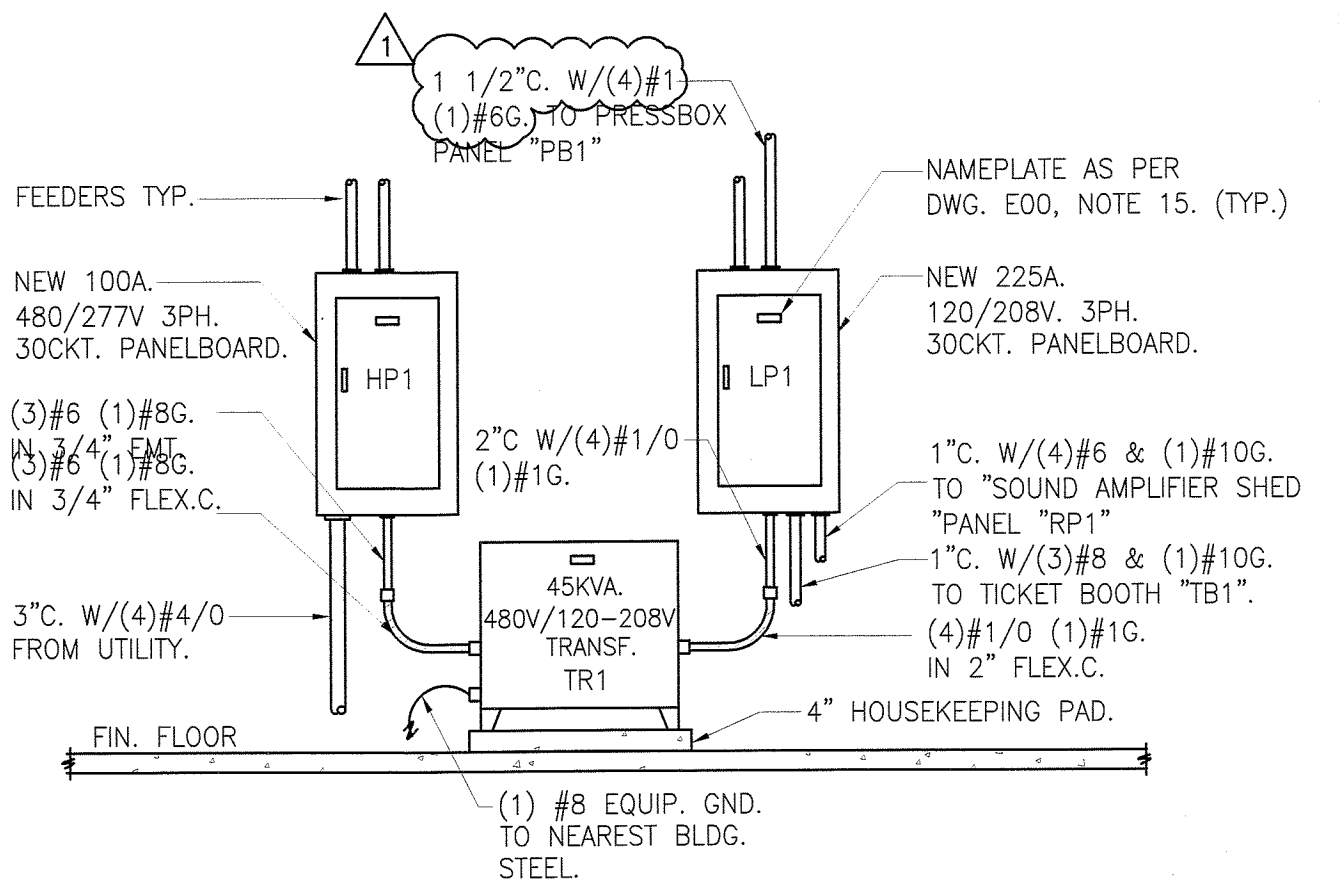


ONE-LINE DIAGRAM

4
E40



ELEVATION VIEW A-A

5
E40

④ CONTRACTOR TO PROVIDE AND INSTALL A 3 POLE, 100A. CIRCUIT BREAKER IN 120/208V PANELBOARD "LP1" FOR POWER TO PRESSBOX PANELBOARD TAGGED "PB1". REFER TO DRAWING E12 FOR PANEL "PB1" SCHEDULE AND ADDITIONAL INFORMATION.

⑦ CONTRACTOR TO PROVIDE AND INSTALL A 3.5KW SINGLE PHASE 480V. INVERTER SUITABLE FOR A MINIMUM OF 90 MINUTES OF EMERGENCY POWER FOR BLEACHER LIGHTING.

⑧ CONTRACTOR TO PROVIDE AND INSTALL A 1KVA-480V/1PH. TO 120V. CONTROL TRANSFORMER. PRIMARY AND SECONDARY WIRES TO BE 2#12, 1#12G IN 3/4" C.

⑨ WIRING IN 1" C. AS DIRECTED BY FIELD LIGHTING VENDOR.

DO NOT SCALE DRAWING
USE DIMENSIONS ONLY

EI
ARCHITECTURE
ENGINEERING
PLANNING
8 RIDGEDALE AVENUE
CEDAR KNOLLS, NJ 07927
973.775.7777

ROBERT E. MARSHALL PROFESSIONAL ENGINEER
LICENSE NO. NJ 38961

EI Associates
ARCHITECTS & ENGINEERS, PA

PROJECT: PISCATAWAY HIGH SCHOOL
BLEACHERS, FIELD LIGHTING &
STORAGE FACILITY
REPLACEMENT
PISCATAWAY NEW JERSEY

PROJECT NO: ES8531.01
DESIGNED BY: REM
REV. BY DATE
DRAWN BY: REB
DWG. NO.

TITLE: ONE-LINE DIAGRAM AND ELEVATION A-A

ISSUE DATE: 19 NOV 19
ESK40