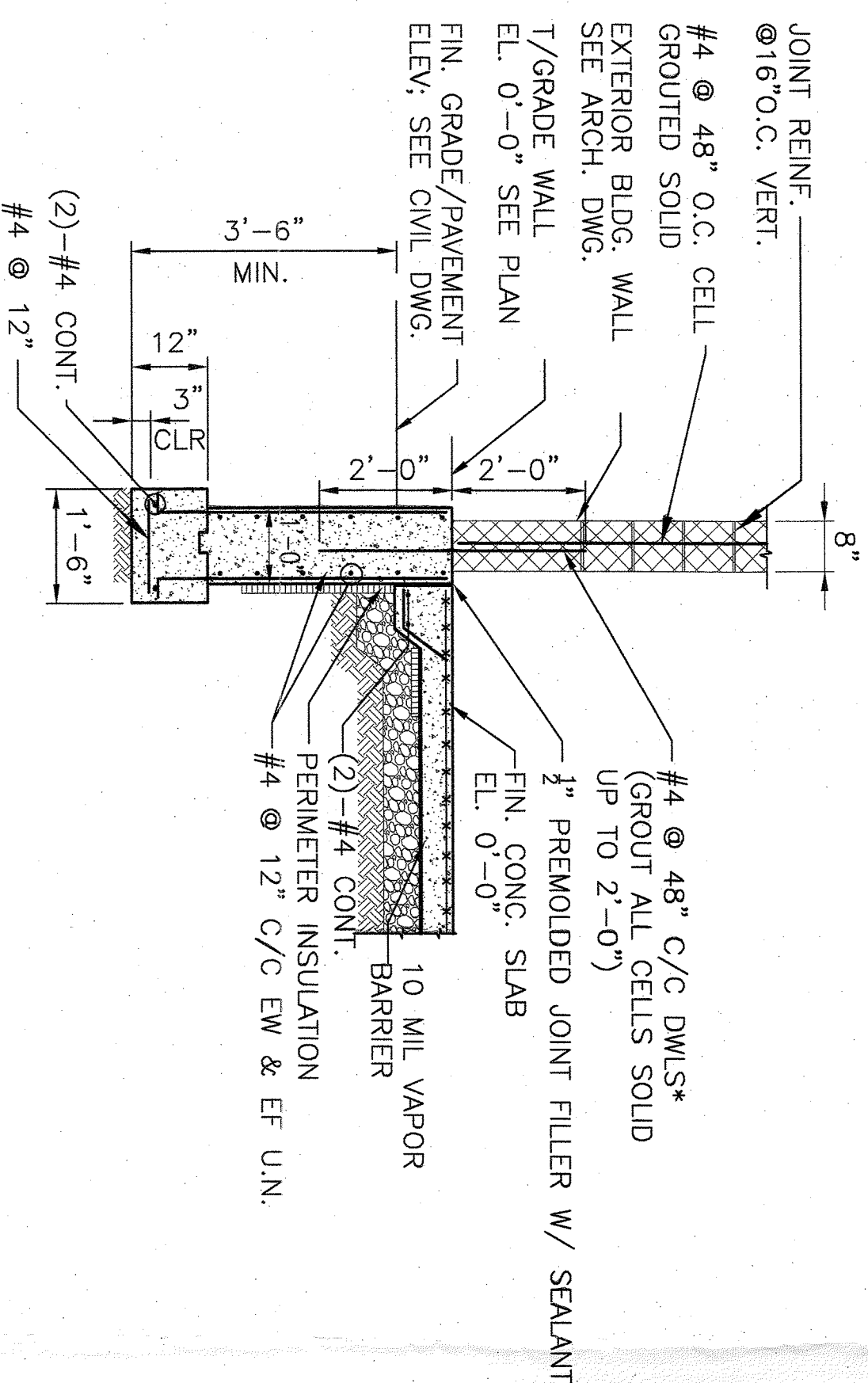
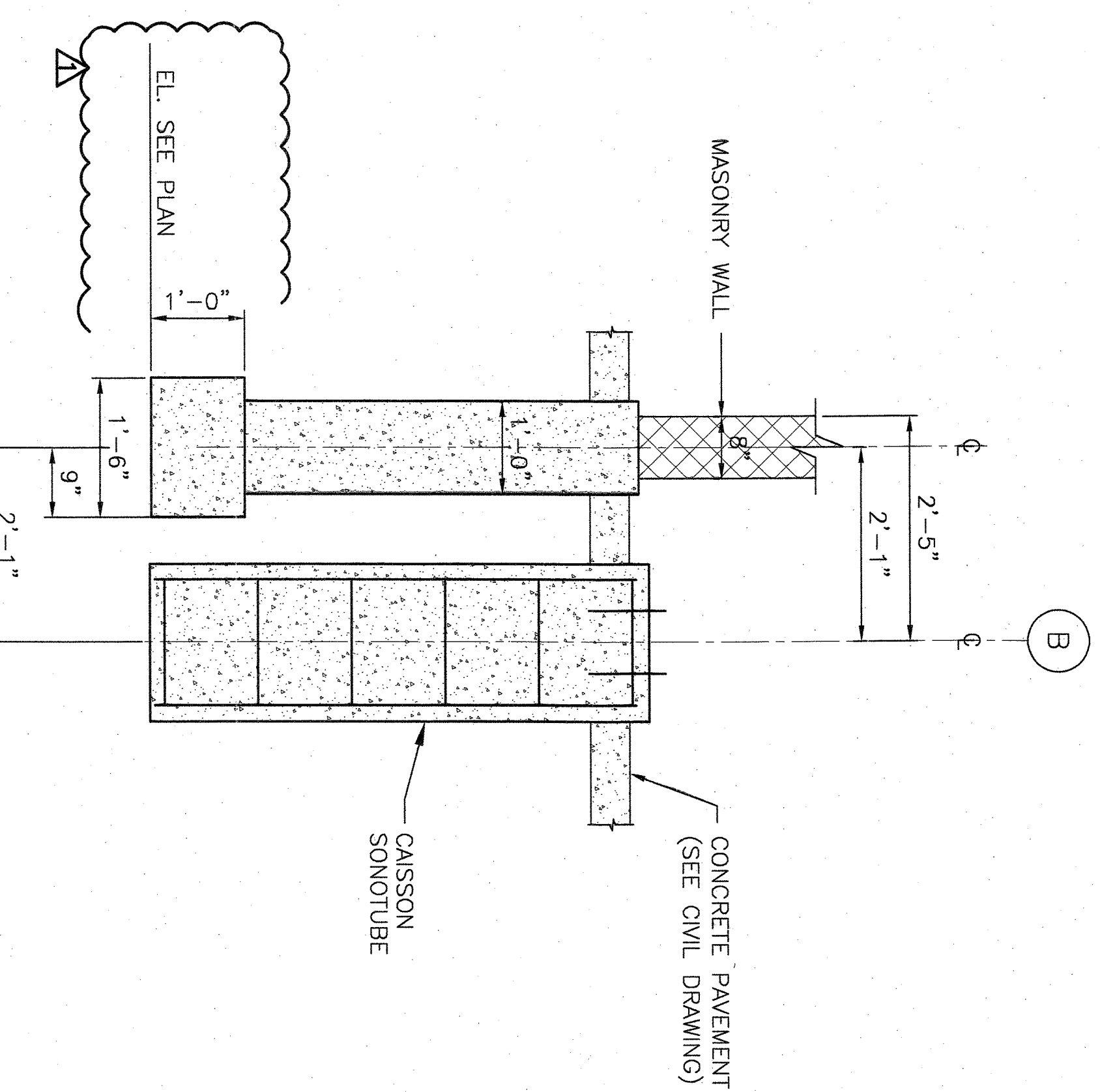


FOUNDATION PLAN 1
1/8"=1'-0"

- NOTES:**
- FOR GENERAL NOTES AND SPECIFICATIONS, SEE DWG. S00.
 - LEGEND:
 - (E) DENOTES EXISTING
 - (N) DENOTES NEW
 - (I.J.) DENOTES ISOLATION JOINT
 - (C.J.) DENOTES CONTROL JOINT
 - (E.J.) DENOTES EXPANSION JOINT
 - BOTTOM/FOOTING ADJACENT TO THE BLEACHER SHOULD MATCH WITH BOTTOM/CAISSON.
 - BLEACHER FOUNDATION FOR HOME AND VISITOR SIDES SHALL BE DESIGNED BY THE BLEACHER SUPPLIER PER GANTY, WIND AND SWAY LOADING.
 - 5" THK. CONCRETE SLAB W/W/WF#6-#2 9x2.9, 10 MIL VAPOR BARRIER, PERIMETER INSULATION, CLEAN GRAVEL AND COMPACTED SUB-SOIL.

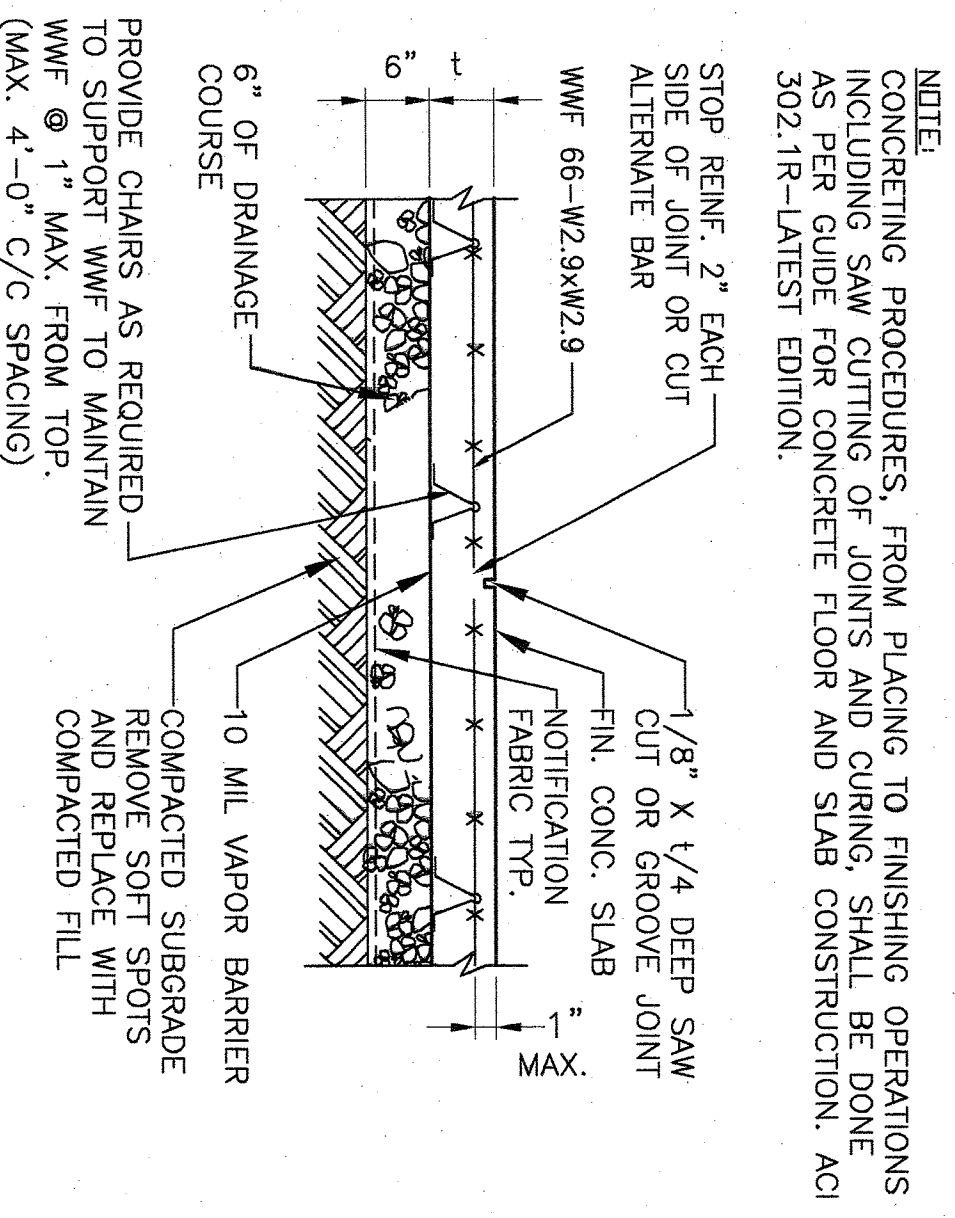


SECTION A
1/2"=1'-0"



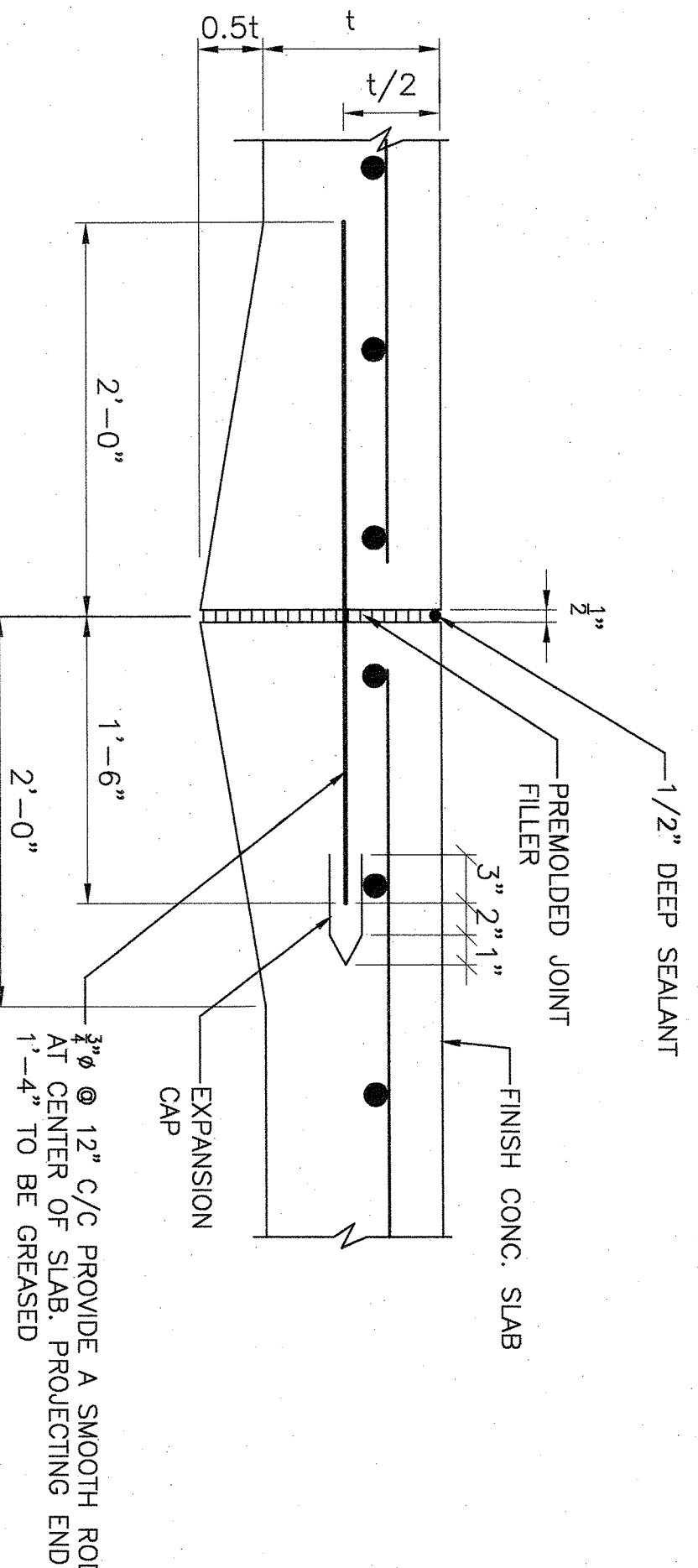
SECTION B
3/4"=1'-0"

NOTE:
NOT SHOWN DETAILS FOR GRADE WALL AND FOOTING, SEE SECT. A



TYP. SLAB ON GRADE AND CONTROL JOINT (CJ) 1
NO SCALE

NOTE:
CONCRETE PROCEDURES, FROM PLACING TO FINISHING OPERATIONS INCLUDING SAW CUTTING OF JOINTS AND CURING, SHALL BE DONE IN ACCORDANCE WITH THE LATEST EDITION OF ACI 302.1R-19 (LATEST EDITION).



TYPICAL EXPANSION JOINT 2
NO SCALE

NOTE:
SEE PLAN FOR JOINT LOCATION.

<p>NUDGE STATE PROJECT NO.: 4130-050-19-4000</p>	
<p>REV. 1 ADDENDUM #1</p>	<p>RPS 19 NOV 2019</p>
<p>REV. 0 ISSUED FOR BID AND CONSTRUCTION</p>	<p>RPS 4 NOV 2018</p>
<p>SYED A. HUSSAIN, P.E.</p>	<p>PROFESSIONAL ENGINEER LICENSE NO. NJ 0249418</p>
<p>PROJECT: PISCATAWAY HIGH SCHOOL BLEACHERS, FIELD LIGHTING & STORAGE FACILITY REPLACEMENT NEW JERSEY</p>	<p>EA DRAWING NO. S10</p>
<p>PROJECT MANAGER: SYED A. HUSSAIN, P.E.</p>	<p>EA PROJECT NO. E39531.01</p>

EI Associates
ARCHITECTS & ENGINEERS, PA
9 MONROE AVENUE SUITE 100
PISCATAWAY, NJ 07092-7577

